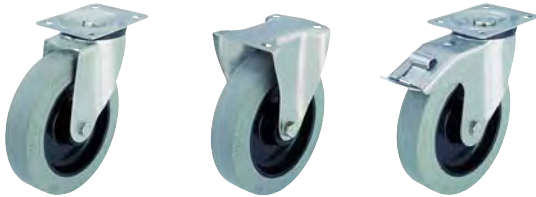


Series: LX-POEV, BX-POEV

Stainless steel swivel and fixed castors, medium duty brackets

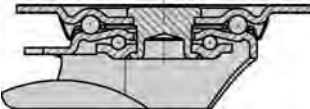
 350 - 400 kg



Brackets: LX/BX Series - Pressed from high-quality, chromium-nickel stainless steel (material No. 1.4301/AISI 304), swivel bracket with double ball bearing in the reinforced swivel head, swivel head sealing, strong central kingpin, bolted wheel axle. All metal parts are stainless steel and brackets are vibration-ground finished.
Top plate drawings: Page 71.
Detailed description: Page 68 and 76.

Wheels: POEV Series - Tyres: Elastic solid rubber, smooth rolling quality, colour grey, non-marking, 65° shore A, vulcanised, non-detachable connection, low rolling resistance.
Wheel centres: Made of high-quality nylon, colour black, shock and impact-resistant, corrosion-resistant, stainless steel roller or sealed ball bearing.
As standard, ball bearing versions are supplied with bearing sealing.
Detailed description: Page 156, 37 and 58.

Swivel castors	Fixed castors	Swivel castors with "stop-fix" brake	Wheel Ø [mm]	Tyre width [mm]	Load capacity [kg]	Bearing version	Total height [mm]	Plate size [mm]	Bolt hole spacing [mm]	Bolt hole Ø [mm]	Offset swvl castor [mm]
Ref. No.	Ref. No.	Ref. No.									
LX-POEV 160XR-SG	BX-POEV 160XR-SG	LX-POEV 160XR-SG-FI	160	50	350	Roller bearing	195	140 x 110	105 x 75-80	11	60
LX-POEV 160KD-SG	BX-POEV 160KD-SG	LX-POEV 160KD-SG-FI	160	50	350	Ball bearing	195	140 x 110	105 x 75-80	11	60
LX-POEV 200XR-SG	BX-POEV 200XR-SG	LX-POEV 200XR-SG-FI	200	50	400	Roller bearing	235	140 x 110	105 x 75-80	11	65
LX-POEV 200KD-SG	BX-POEV 200KD-SG	LX-POEV 200KD-SG-FI	200	50	400	Ball bearing	235	140 x 110	105 x 75-80	11	65



Variants / Accessories

	With stainless steel ball bearing in the wheel hub
Technical description page	57
Ref. No. extension	-XK
Available for wheel Ø [mm]	Upon request