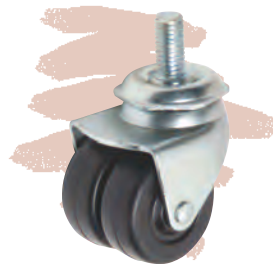


## 3D series

- Business Machines
- Pianos
- Low Profile Heavy Displays
- Drum Dollies



### "3D" Series Dual Wheel Swivel Casters offering High Load Capacity with Ease of Movement

Wheel diameter Inch / (mm)	Tread Width Inch (mm)	Load Rating <sup>2</sup> Lbs. / Kg.	Wheel Color	Caster Finish	Wheel Material	Overall Height <sup>2</sup> (Reference only)	Mounting Options <sup>3</sup>	Part Numbers-Swivel
2" (50mm)	3/4" (19mm) Dual Wheels	200 lbs. (90 Kg.)	Black	Zinc	Black Poly	Stem 2-13/16" (73mm)	D-Friction Ring Stem (7/16" X 1-3/8") E-Stem Straight (7/16" X 1-7/8") F-Threaded Stem (7/16" - 14)3 H-Threaded Stem (1/2" - 13 - 1") 30 Plate (2-3/4" X 3-5/8") LE Plate (1-3/4" X 3")	3D050ABLZD22XXX 3D050ABLZE30XXX 3D050ABLZF16XXX 3D050ABLZH16XXX 3D050ABLZT30XXX 3D050ABLZTLEXXX
						Plate 3" (75mm)		
2" (50mm)	3/4" (19mm) Dual Wheels	150 lbs. (68 Kg.)	Black	Zinc	Bushed Hard Core Soft Tread Rubber	Stem 2-13/16" (73mm)	D-Friction Ring Stem (7/16" X 1-3/8") E-Stem Straight (7/16" X 1-7/8") F-Threaded Stem (7/16" - 14)3 H-Threaded Stem (1/2" - 13 - 1") 30 Plate (2-3/4" X 3-5/8") LE Plate (1-3/4" X 3")	3D0502BLZD22XXX 3D0502BLZE30XXX 3D0502BLZF16XXX 3D0502BLZH16XXX 3D0502BLZT30XXX 3D0502BLZTLEXXX
						Plate 3" (75mm)		
2" (50mm)	3/4" (19mm) Dual Wheels	200 lbs. (90 Kg.)	Black	Zinc	Bushed - All Hard Rubber	Stem 2-13/16" (73mm)	D-Friction Ring Stem (7/16" X 1-3/8") E-Stem Straight (7/16" X 1-7/8") F-Threaded Stem (7/16" - 14)3 H-Threaded Stem (1/2" - 13 - 1") 30 Plate (2-3/4" X 3-5/8") LE Plate (1-3/4" X 3")	3D0506BLZD22XXX 3D0506BLZE30XXX 3D0506BLZF16XXX 3D0506BLZH16XXX 3D0506BLZT30XXX 3D0506BLZTLEXXX
						Plate 3" (75mm)		
3" (75mm)	1" (25mm) Dual Wheels	220 lbs (100 Kg.)	Light Grey	Zinc	Thermo- Plastic Rubber	Bolt Hole 4" (100mm)	Bolt Hole Fitting  Top-Plate	Contact Factory  Contact Factory
						Plate 4" (103mm)		

Additional colors available - Contact factory for details

Additional finishes also available - Contact factory for details

Additional wheel materials available - Contact factory for details types

Additional mounting options are available - Contact factory for specifications

1. Overall heights are estimated. For exact dimensions and tolerances, please contact factory and request samples to determine fitness for use in your application.

2. Load ratings are estimated. Always load test your caster to your required application to determine fitness for use.

3. Please refer to pages 37 & 40 for specific lengths and mounting options.