

1S & 1R series

- Utility Trucks
- Laundry Carts
- Bread Trucks
- Canvas Basket Trucks

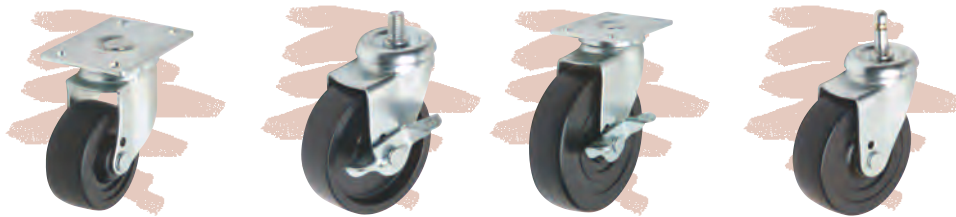


"1S" and "1R" Series Swivel/Rigid 'Truck and Dolly' Casters utilizing a Consistent Hole Pattern for both Swivel and Rigid

Wheel diameter Inch / (mm)	Caster Width Inch (mm)	Load Rating ² Lbs. / Kg.	Wheel Color	Caster Finish	Wheel Material	Overall Height ¹ (Reference only)	Mounting Options ³	Part Numbers
Swivel Only								
3" (75mm)	1-1/4" (31.7mm)	250 lbs. (114 Kg.)	Black	Zinc	Black Poly	3-7/8" (98mm)	10 Plate (3-1/8" X 4-1/8") 30 Plate (2-3/4" X 3-5/8")	IS076BBLZTDDXXX IS076BBLZT30XXX
See Icons below for options								
3" (75mm)	1-1/4" (31.7mm)	125 lbs. (57 Kg.)	Black	Zinc	Bushed Hard Core Soft Tread Rubber	3-7/8" (98mm)	10 Plate (3-1/8" X 4-1/8") 30 Plate (2-3/4" X 3-5/8")	IS0762BLZTDDXXX IS0762BLZT30XXX
See Icons below for options								
3" (75mm)	1-1/4" (31.7mm)	250 lbs. (114 Kg.)	Black	Zinc	Bushed - All Hard Rubber	3-7/8" (98mm)	10 Plate (3-1/8" X 4-1/8") 30 Plate (2-3/4" X 3-5/8")	IS0766BLZTDDXXX IS0766BLZT30XXX
See Icons below for options								
Rigid Only								
3" (75mm)	1-1/4" (31.7mm)	250 lbs. (114 Kg.)	Black	Zinc	Black Poly	3-7/8" (98mm)	10 Plate (3-1/8" X 4-1/8")	IR076BBLZTDDXXX
See Icons below for options								
3" (75mm)	1-1/4" (31.7mm)	125 lbs. (57 Kg.)	Black	Zinc	Bushed Hard Core Soft Tread Rubber	3-7/8" (98mm)	10 Plate (3-1/8" X 4-1/8")	IS0762BLZTDDXXX
3" (75mm)	1-1/4" (31.7mm)	250 lbs. (114 Kg.)	Black	Zinc	Bushed - All Hard Rubber	3-7/8" (98mm)	10 Plate (3-1/8" X 4-1/8")	IS0766BLZTDDXXX

4S & 4R series

- Tool Boxes
- Light Warehouse
- Stock Trucks
- Hotel Trucks



"4S" and "4R" Series Swivel/Rigid Medium Duty Casters designed around your Industrial Material Handling needs

Wheel diameter Inch / (mm)	Caster Width Inch (mm)	Load Rating ² Lbs. / Kg.	Wheel Color	Caster Finish	Wheel Material	Overall Height ¹ (Reference only)	Mounting Options ³	Part Numbers
Swivel Only								
3" (75mm)	1-1/4" (31.7mm)	250 lbs. (114 Kg.)	Black	Zinc	Black Poly	Stem 4-1/16" (103mm) Plate 3-3/4" (96mm)	D-Friction Ring Stem (7/16" X 1-3/8") E-Stem Straight (7/16" X 1-7/8") H-Threaded Stem (1/2" - 13 - 1") 40 Plate (2-3/4" X 3-5/8")	4S076BBLZD22XXX 4S076BBLZE30XXX 4S076BBLZH16XXX 4S076BBLZT40XXX
See Icons below for options								
3" (75mm)	1-1/4" (31.7mm)	200 lbs. (90 Kg.)	Black	Zinc	Bushed Hard Core Soft Tread Rubber	Stem 4-1/16" (103mm) Plate 3-3/4" (96mm)	D-Friction Ring Stem (7/16" X 1-3/8") E-Stem Straight (7/16" X 1-7/8") H-Threaded Stem (1/2" - 13 - 1") 40 Plate (2-3/4" X 3-5/8")	4S0762BLZD22XXX 4S0762BLZE30XXX 4S0762BLZH16XXX 4S0762BLZT40XXX
See Icons below for options								

4S & 4R series

- Tool Boxes
- Light Warehouse
- Stock Trucks
- Hotel Trucks



"4S" and "4R" Series Swivel/Rigid Medium Duty Casters designed around your Industrial Material Handling needs

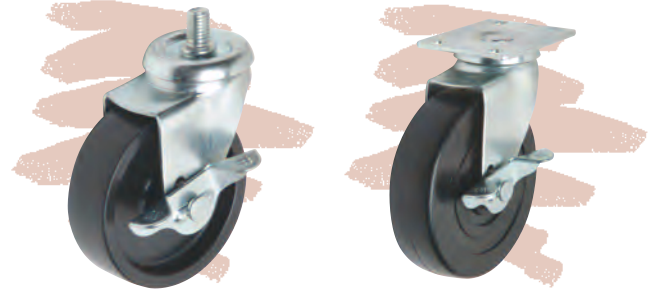
Wheel diameter Inch / (mm)	Caster Width Inch (mm)	Load Rating ² Lbs. / Kg.	Wheel Color	Caster Finish	Wheel Material	Overall Height ¹ (Reference only)	Mounting Options ³	Part Numbers
3" (75mm)	1-1/4" (31.7mm)	250 lbs. (114 Kg.)	Black	Zinc	Bushed - All Hard Rubber	Stem	D-Friction Ring Stem (7/16" X 1-3/8")	4S0766BLZD22XXX 4S0766BLZE30XXX 4S0766BLZH16XXX 4S0766BLZT40XXX
						4-1/16" (103mm) Plate	E-Stem Straight (7/16" X 1-7/8") H-Threaded Stem (1/2" - 13 - 1") 40 Plate (2-3/4" X 3-5/8")	
See Icons below for options								
4" (100mm)	1-1/4" (31.7mm)	250 lbs. (114 Kg.)	Black	Zinc	Black Poly	Stem	D-Friction Ring Stem (7/16" X 1-3/8")	4S101BBLZD22XXX 4S101BBLZE30XXX 4S101BBLZH16XXX 4S101BBLZT40XXX
						4-15/16" (126mm) Plate	E-Stem Straight (7/16" X 1-7/8") H-Threaded Stem (1/2" - 13 - 1") 40 Plate (2-3/4" X 3-5/8")	
See Icons below for options								
4" (100mm)	1-1/4" (31.7mm)	200 lbs. (90 Kg.)	Black	Zinc	Bushed Hard Core	Stem	D-Friction Ring Stem (7/16" X 1-3/8")	4S1012BLZD22XXX 4S1012BLZE30XXX 4S1012BLZH16XXX 4S1012BLZT40XXX
					Soft Tread Rubber	4-15/16" (126mm) Plate	E-Stem Straight (7/16" X 1-7/8") H-Threaded Stem (1/2" - 13 - 1") 40 Plate (2-3/4" X 3-5/8")	
See Icons below for options								
4" (100mm)	1-1/4" (31.7mm)	250 lbs. (114 Kg.)	Black	Zinc	Bushed - All Hard Rubber	Stem	D-Friction Ring Stem (7/16" X 1-3/8")	4S1016BLZD22XXX 4S1016BLZE30XXX 4S1016BLZH16XXX 4S1016BLZT40XXX
						4-15/16" (126mm) Plate	E-Stem Straight (7/16" X 1-7/8") H-Threaded Stem (1/2" - 13 - 1") 40 Plate (2-3/4" X 3-5/8")	
See Icons below for options								
5" (125mm)	1-3/8" (35mm)	250 lbs. (114 Kg.)	Black	Zinc	Black Poly	Stem	D-Friction Ring Stem (7/16" X 1-3/8")	4S127BBLZD22XXX 4S127BBLZE30XXX 4S127BBLZH16XXX 4S127BBLZT40XXX
						6-1/16" (153mm) Plate	E-Stem Straight (7/16" X 1-7/8") H-Threaded Stem (1/2" - 13 - 1") 40 Plate (2-3/4" X 3-5/8")	
See Icons below for options								
5" (125mm)	1-3/8" (35mm)	200 lbs. (90 Kg.)	Black	Zinc	Bushed Hard Core	Stem	D-Friction Ring Stem (7/16" X 1-3/8")	4S1272BLZD22XXX 4S1272BLZE30XXX 4S1272BLZH16XXX 4S1272BLZT40XXX
					Soft Tread Rubber	6-1/16" (153mm) Plate	E-Stem Straight (7/16" X 1-7/8") H-Threaded Stem (1/2" - 13 - 1") 40 Plate (2-3/4" X 3-5/8")	
See Icons below for options								
5" (125mm)	1-3/8" (35mm)	250 lbs. (114 Kg.)	Black	Zinc	Bushed - All Hard Rubber	Stem	D-Friction Ring Stem (7/16" X 1-3/8")	4S1276BLZD22XXX 4S1276BLZE30XXX 4S1276BLZH16XXX 4S1276BLZT40XXX
						6-1/16" (153mm) Plate	E-Stem Straight (7/16" X 1-7/8") H-Threaded Stem (1/2" - 13 - 1") 30 Plate (2-3/4" X 3-5/8")	
See Icons below for options								
Rigid Only								
3" (75mm)	1-1/4" (31.7mm)	250 lbs.	Black	Zinc	Black Poly	3-3/4" (96mm)	40 Plate (2-3/4" X 3-5/8")	4R076BBLZT40XXX 4R0762BLZT40XXX 4R0766BLZT40XXX
		200 lbs.			HCST Rubber		40 Plate (2-3/4" X 3-5/8")	
See Icons below for options								
4" (100mm)	1-1/4" (31.7mm)	250 lbs.	Black	Zinc	Black Poly	5-1/8" (130mm)	40 Plate (2-3/4" X 3-5/8")	4R101BBLZT40XXX 4R1012BLZT40XXX 4R1016BLZT40XXX
		200 lbs.			HCST Rubber		40 Plate (2-3/4" X 3-5/8")	
See Icons below for options								
5" (125mm)	1-3/8" (35mm)	250 lbs.	Black	Zinc	Black Poly	6-3/16" (157mm)	40 Plate (2-3/4" X 3-5/8")	4R127BBLZT40XXX 4R1272BLZT40XXX 4R1276BLZT40XXX
		200 lbs.			HCST Rubber		40 Plate (2-3/4" X 3-5/8")	
See Icons below for options								
5" (125mm)	1-3/8" (35mm)	250 lbs.	Black	Zinc	Black Poly	6-3/16" (157mm)	40 Plate (2-3/4" X 3-5/8")	4R1276BLZT40XXX
		200 lbs.			HCST Rubber		40 Plate (2-3/4" X 3-5/8")	
See Icons below for options								

Additional colors available - Contact factory for details
 Additional finishes also available - Contact factory for details
 Additional wheel materials available - Contact factory for details types
 Additional mounting options are available - Contact factory for specifications
 Options: Side Brake Nut and Bolt Axles Rigid with Top Plate Wrap Around Brake

1. Overall heights are estimated. For exact dimensions and tolerances, please contact factory and request samples to determine fitness for use in your application.
 2. Load ratings are estimated. Always load test your caster to your required application to determine fitness for use.
 3. Please refer to pages 37 & 40 for specific lengths and mounting options.

5S & 5R series

- Automotive Testing Equipment
- School Equipment
- Stock Trucks
- Mobile Warehousing Equipment



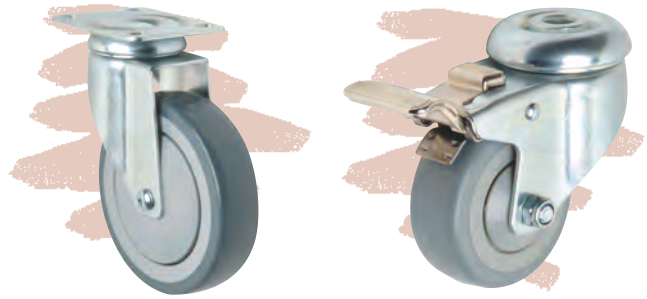
"5S" and "5R" Series Swivel/Rigid Medium Duty Casters designed to provide Additional Load Capacity over the Series 4S & 4R

Wheel diameter Inch / (mm)	Tread Width Inch (mm)	Load Rating ² Lbs. / Kg.	Wheel Color	Caster Finish	Wheel Material	Overall Height ² (Reference only)	Mounting Options ³	Part Numbers-Swivel
3" (75mm)	1-1/4" (31.7mm)	275 lbs. (125 Kg.)	Black	Zinc	Black Poly	Stem	D-Friction Ring Stem (7/16" X 1-3/8")	5S076BBLZD22XXX
						Plate	E-Stem Straight (7/16" X 1-7/8") H-Threaded Stem (1/2" - 13 - 1") 40 Plate (2-3/4" X 3-5/8")	5S076BBLZE30XXX 5S076BBLZH16XXX 5S076BBLZT40XXX
See Icons below for options								
3" (75mm)	1-1/4" (31.7mm)	275 lbs. (125 Kg.)	Black	Zinc	Bushed - All Hard Rubber	Stem	D-Friction Ring Stem (7/16" X 1-3/8")	5S0766BLZD22XXX
						Plate	E-Stem Straight (7/16" X 1-7/8") H-Threaded Stem (1/2" - 13 - 1") 40 Plate (2-3/4" X 3-5/8")	5S0766BLZE30XXX 5S0766BLZH16XXX 5S0766BLZT40XXX
See Icons below for options								
4" (100mm)	1-1/4" (31.7mm)	275 lbs. (125 Kg.)	Black	Zinc	Black Poly	Stem	D-Friction Ring Stem (7/16" X 1-3/8")	5S101BBLZD22XXX
						Plate	E-Stem Straight (7/16" X 1-7/8") H-Threaded Stem (1/2" - 13 - 1") 40 Plate (2-3/4" X 3-5/8")	5S101BBLZE30XXX 5S101BBLZH16XXX 5S101BBLZT40XXX
See Icons below for options								
4" (100mm)	1-1/4" (31.7mm)	275 lbs. (125 Kg.)	Black	Zinc	Bushed - All Hard Rubber	Stem	D-Friction Ring Stem (7/16" X 1-3/8")	5S1016BLZD22XXX
						Plate	E-Stem Straight (7/16" X 1-7/8") H-Threaded Stem (1/2" - 13 - 1") 40 Plate (2-3/4" X 3-5/8")	5S1016BLZE30XXX 5S1016BLZH16XXX 5S1016BLZT40XXX
See Icons below for options								
5" (125mm)	1-3/8" (35mm)	275 lbs. (125 Kg.)	Black	Zinc	Black Poly	Stem	D-Friction Ring Stem (7/16" X 1-3/8")	5S127BBLZD22XXX
						Plate	E-Stem Straight (7/16" X 1-7/8") H-Threaded Stem (1/2" - 13 - 1") 40 Plate (2-3/4" X 3-5/8")	5S127BBLZE30XXX 5S127BBLZH16XXX 5S127BBLZT40XXX
See Icons below for options								
5" (125mm)	1-3/8" (35mm)	275 lbs. (125 Kg.)	Black	Zinc	Bushed - All Hard Rubber	Stem	D-Friction Ring Stem (7/16" X 1-3/8")	5S1276BLZD22XXX
						Plate	E-Stem Straight (7/16" X 1-7/8") H-Threaded Stem (1/2" - 13 - 1") 40 Plate (2-3/4" X 3-5/8")	5S1276BLZE30XXX 5S1276BLZH16XXX 5S1276BLZT40XXX
See Icons below for options								
Rigid Only								
3" (75mm)	1-1/4" (31.7mm)	275 lbs. (125 Kg.)	Black	Zinc	Black Poly	3-3/4 (96mm)	40 Plate (2-3/4" X 3-5/8")	5R076BBLZT40XXX
					HCST Rubber		40 Plate (2-3/4" X 3-5/8")	5R0762BLZT40XXX
See Icons below for options								
4" (100mm)	1-1/4" (31.7mm)	275 lbs. (125 Kg.)	Black	Zinc	Black Poly	5-1/8 (130mm)	40 Plate (2-3/4" X 3-5/8")	5R101BBLZT40XXX
					HCST Rubber		40 Plate (2-3/4" X 3-5/8")	5R1012BLZT40XXX
See Icons below for options								
5" (125mm)	1-3/8" (35mm)	275 lbs. (125 Kg.)	Black	Zinc	Black Poly	6-3/16 (157mm)	40 Plate (2-3/4" X 3-5/8")	5R127BBLZT40XXX
					HCST Rubber		40 Plate (2-3/4" X 3-5/8")	5R1272BLZT40XXX
See Icons below for options								

Additional finishes also available - Contact factory for details Additional wheel materials available - Contact factory for details types
 Additional mounting options are available - Contact factory for specifications Options: Side Brake Wrap around Brake Nut and Bolt Axles Rigid with Top Plate

35 series

- Medical Equipment
- Mobile Work Stations
- Displays
- Office Equipment



"35" Series Industrial Style Heavy Duty Swivel Casters with Total Lock Braking capabilities

Wheel diameter Inch / (mm)	Caster Width Inch (mm)	Load Rating ² Lbs. / Kg.	Wheel Color	Caster Finish	Wheel Material	Overall Height ¹ (Reference only)	Mounting Options ³	Part Numbers
Swivel Only								
3" (75mm)	1-1/4" (32mm)	110 lbs. (50 Kg.)	Light Grey	Zinc	Thermo- Plastic Rubber	4-7/32"(107mm)	Plate	Contact factory
						4-7/32"(107mm)	Threaded	Contact factory
						4-3/32"(104mm)	Bolt Hole fitting	Contact factory
See Icons below for options								
4" (100mm)	1-1/4" (32mm)	176 lbs. (80 Kg.)	Light Grey	Zinc	Thermo- Plastic Rubber	5-5/16"(135mm)	Plate	Contact factory
						5-5/16"(135mm)	Threaded	Contact factory
						5-5/16"(135mm)	Round Stem with Mounting hole	Contact factory
						5-7/32"(132.5mm)	Bolt Hole fitting	Contact factory
See Icons below for options								
5" (125mm)	1-1/4" (32mm)	220 lbs. (100 Kg.)	Light Grey	Zinc	Thermo- Plastic Rubber	6-11/32"(161mm)	Plate	Contact factory
						6-11/32"(161mm)	Threaded	Contact factory
						6-11/32"(161mm)	Round Stem with Mounting hole	Contact factory
						6-7/32"(158.5mm)	Bolt Hole fitting	Contact factory
See Icons below for options								
Swivel with Total Lock Braking System								
4" (100mm)	1-1/4" (32mm)	176 lbs. (80 Kg.)	Light Grey	Zinc	Thermo- Plastic Rubber	5-5/16" (135mm)	Top Plate	Contact factory
						5-5/16" (135mm)	Threaded	Contact factory
						5-5/16" (135mm)	Round Stem with Mounting hole	Contact factory
						5-7/32" (132.5mm)	Bolt Hole fitting	Contact factory
See Icons below for options								
5" (125mm)	1-1/4" (32mm)	220 lbs. (100 Kg.)	Light Grey	Zinc	Thermo- Plastic Rubber	6-11/32" (161mm)	Top Plate	Contact factory
						6-11/32" (161mm)	Threaded	Contact factory
						6-11/32" (161mm)	Round Stem with Mounting hole	Contact factory
						6-7/32" (158.5mm)	Bolt Hole fitting	Contact factory
See Icons below for options								
Rigid								
4" (100mm)	1-1/4" (32mm)	176 lbs. (80 Kg.)	Light Grey	Zinc	Thermo- Plastic Rubber	5-5/16" (135mm)	Top Plate	Contact factory
5" (125mm)	1-1/4" (32mm)	220 lbs. (100 Kg.)	Light Grey	Zinc	Thermo- Plastic Rubber	6-11/32" (161mm)	Top Plate	Contact factory

Additional colors available - Contact factory for details

Additional finishes also available - Contact factory for details

Additional wheel materials available - Contact factory for details types

Additional mounting options are available - Contact factory for specifications

Options: Steel Brake Lever Dual Brake Lever Metal and Plastic-Thread guards

1. Overall heights are estimated. For exact dimensions and tolerances, please contact factory and request samples to determine fitness for use in your application.

2. Load ratings are estimated. Always load test your caster to your required application to determine fitness for use.

3. Please refer to pages 37 & 40 for specific lengths and mounting options.