

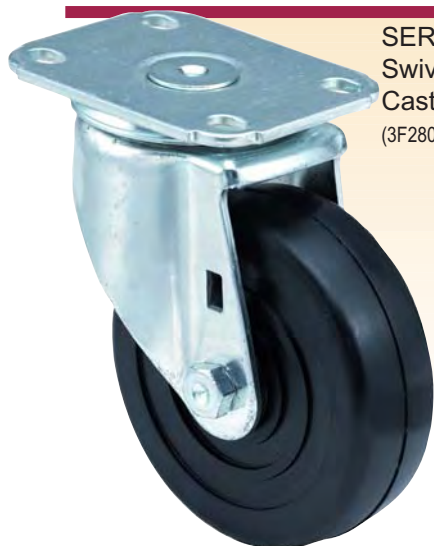
125 to 450 lb. capacity
1 1/4" to 1 1/2" wheel tread width

Americaster™ Institutional Series Swivel and Rigid Plate Casters, Swivel Stem Casters

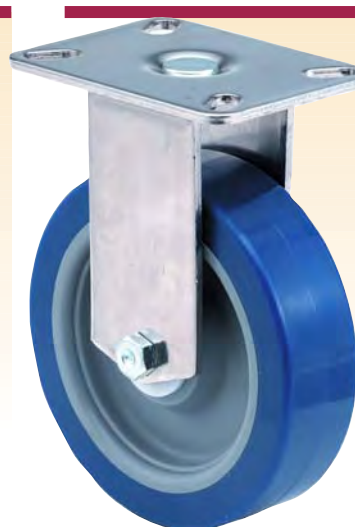


STANDARD FEATURES

- **Medium duty applications.**
- **Double row swivel construction.**
- **3/8" diameter nut and bolt axle.**
- **Delrin wheel bearing offers a long life due to its resistance to thermal and chemical deterioration.**
- **Zinc-plated finish for corrosion resistance and appearance.**
- **Heat treat hardened and factory lubricated swivel raceways.**
- **Assembly wrench 8G000192797**



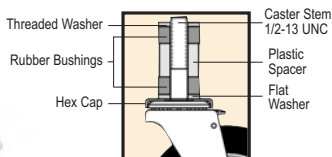
SERIES 3F28
Swivel Plate Caster
(3F2804D040001AM)



SERIES 3F23
Two-piece Rigid Plate Caster
(3F2304B2500797)

OPTIONS Consult Factory

Expandable Stem Adapters



These stems will fit a variety of round and square tubing sizes. They feature a top-mounted, easily accessible hex cap for ease of assembly and tightening. The two rubber bushings permit easy tightening in tubing, while the plastic spacer adds stability to the assembly.

LIGHT DUTY ADAPTERS (For 3F09 and 3F29 Series Casters)

Factory Installed Code #	Expandable Kit Model No.	Fits Tubing I.D. Size
E1	1F000233094	0.750" to 0.999"
E2	1F000233194	1.000" to 1.249"
E3	1F000233294	1.250" to 1.499"
E4	1F000233394	1.500" to 1.749"

Specify stem code number 25 in caster part number. Casters and expandable stem kits can be ordered separately or factory can install expandable adapter onto the caster.

Strap Type Wheel Brake



Positive lock wheel brake works equally well with all types of wheel bearings because it engages the top of the wheel tread rather than using a pinching type braking action. Available on wheel sizes from 3" to 6".
Not recommended for use with Semi-Steel wheels.

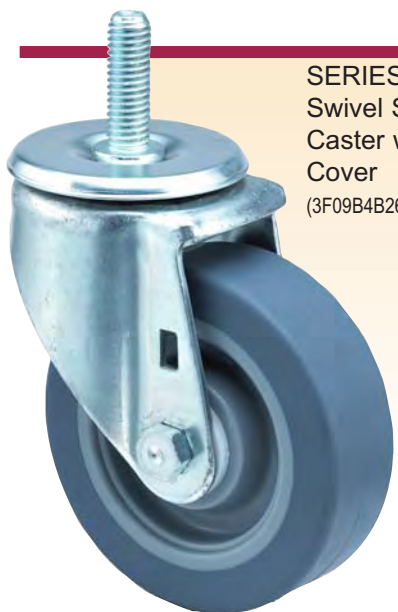
Wheel Bearings



Roller Bearings are best suited to heavy load applications. They provide optimum start-up and rolling ease at both high and low speeds.



Ball Bearings provide optimum start-up and rolling for capacities of 250 lbs. or less.



SERIES 3F09
Swivel Stem
Caster with Dust
Cover
(3F09B4B26000110)

Wheel Types



Cushionex Supreme
Black soft rubber tread molded to black hard rubber core.



Poly II Rubber
Dark gray thermoplastic rubber tread molded to light gray polypropylene core.



Spartan Supreme
Black hard rubber tread molded to black hard rubber core.



Poly II Poly
Black polypropylene tread molded to black polypropylene core.



Poly II Urethane
Dark blue polyurethane tread molded to light gray polypropylene core.



Duratex Phenolic
Black phenolic resin reinforced with macerated fabric.



Semi-steel
Cast iron enriched with steel.



Poly II Wheel Design
"Interlocking tunnels" allow the wheel tread material to flow through wheel core channels when molded, providing a mechanical lock which prevents tread separation from the core.

OPTIONS Consult Factory

Grease Seal/ Dust Cover



Dust cover and grease seal options are available on all swivel models. The dust cover provides protection from dust and water. The grease seals are designed to protect both the upper and lower raceways by keeping the lubricant in and dirt and moisture out. Offers the ultimate in swivel bearing protection ensuring optimum performance and durability.

Thread Guard



- Prevents objects from wrapping on wheel axle and obstructing rotation.
- Cannot be used with wheel brake.
- Available for most wheels.

Other

Economical 3/8" Diameter
Rivet Axle
Nickel-Plated Finish
NSF Certified Casters Available



Americaster specifications are shown on pages 26 and 27.

Americaster™ Institutional Series Swivel and Rigid Plate Casters, Swivel Stem Casters

A Wheel Dia. (inches)	Approximate Tread Width (inches)	Caster Capacity (pounds)	Wheel Bearing Type	B Height (inches)	C Swivel Radius (inches)	Approximate Weight (pounds)	Swivel Plate Caster Part No.	Rigid Plate Caster Part No.	Swivel Stem Caster Part No.
CUSHIONEX SUPREME WHEEL									
3-1/2	1-1/4	155	Delrin	4-5/8	3-3/16	2-1/4	3F0809D040001**	3F0309D040001**	3F0909D040001**
4	1-1/4	165	Delrin	5-1/8	3-3/8	2-1/2	3F0804D040001**	3F0304D040001**	3F0904D040001**
4	1-3/8	200	Delrin	5-3/8	3-3/8	2-3/4	3F2804D040001**	3F2304D040001**	3F2904D040001**
5	1-1/4	200	Delrin	6-1/4	3-15/16	3-1/4	3F0805D040001**	3F0305D040001**	3F0905D040001**
5	1-3/8	240	Delrin	6-3/8	3-15/16	3-1/2	3F2805D040001**	3F2305D040001**	3F2905D040001**
6	1-3/8	280	Delrin	7-3/8	4-7/16	4-1/2	3F2806D040001**	3F2306D040001**	3F2906D040001**
POLY II RUBBER WHEEL									
3	1-1/4	210	Delrin	4-3/8	2-15/16	1-3/4	3F0803B260801**	3F0303B260801**	3F0903B260801**
3-1/2	1-1/4	250	Delrin	4-5/8	3-3/16	2	3F0809B260001**	3F0309B260001**	3F0909B260001**
4	1-1/4	275	Delrin	5-1/8	3-3/8	2	3F0804B260001**	3F0304B260001**	3F0904B260001**
4	1-1/2	275	Delrin	5-3/8	3-3/8	2-1/4	3F2804B260001**	3F2304B260001**	3F2904B260001**
5	1-1/4	300	Delrin	6-1/4	3-15/16	2-1/2	3F0805B260001**	3F0305B260001**	3F0905B260001**
5	1-1/2	300	Delrin	6-3/8	3-15/16	2-3/4	3F2805B260001**	3F2305B260001**	3F2905B260001**
6	1-1/2	300	Delrin	7-3/8	4-7/16	3-1/4	3F2806B260001**	3F2306B260001**	3F2906B260001**
SPARTAN SUPREME WHEEL									
3-1/2	1-1/4	250	Delrin	4-5/8	3-3/16	2-1/4	3F0809D090001**	3F0309D090001**	3F0909D090001**
4	1-1/4	255	Delrin	5-1/8	3-3/8	2-1/2	3F0804D090001**	3F0304D090001**	3F0904D090001**
4	1-3/8	300	Delrin	5-3/8	3-3/8	2-3/4	3F2804D090001**	3F2304D090001**	3F2904D090001**
5	1-1/4	280	Delrin	6-1/4	3-15/16	3-1/4	3F0805D090001**	3F0305D090001**	3F0905D090001**
5	1-3/8	350	Delrin	6-3/8	3-15/16	3-1/2	3F2805D090001**	3F2305D090001**	3F2905D090001**
6	1-3/8	400	Delrin	7-3/8	4-7/16	4-1/2	3F2806D090001**	3F2306D090001**	3F2906D090001**
POLY II POLY WHEEL									
3	1-1/4	210	Delrin	4-3/8	2-15/16	1-3/4	3F0803B270801**	3F0303B270801**	3F0903B270801**
3-1/2	1-1/4	250	Delrin	4-5/8	3-3/16	2	3F0809B270001**	3F0309B270001**	3F0909B270001**
4	1-3/8	375	Delrin	5-1/8	3-3/8	2	3F0804B270001**	3F0304B270001**	3F0904B270001**
4	1-3/8	375	Delrin	5-3/8	3-3/8	2-1/4	3F2804B270001**	3F2304B270001**	3F2904B270001**
5	1-3/8	450	Delrin	6-1/4	3-15/16	2-1/2	3F0805B270001**	3F0305B270001**	3F0905B270001**
5	1-3/8	450	Delrin	6-3/8	3-15/16	2-3/4	3F2805B270001**	3F2305B270001**	3F2905B270001**
6	1-3/8	450	Delrin	7-3/8	4-7/16	3-1/4	3F2806B270001**	3F2306B270001**	3F2906B270001**
POLY II URETHANE WHEEL									
3	1-1/4	210	Delrin	4-3/8	2-15/16	1-3/4	3F0803B250801**	3F0303B250801**	3F0903B250801**
3-1/2	1-1/4	250	Delrin	4-5/8	3-3/16	2	3F0809B250001**	3F0309B250001**	3F0909B250001**
4	1-1/4	275	Delrin	5-1/8	3-3/8	2	3F0804B250001**	3F0304B250001**	3F0904B250001**
4	1-1/2	375	Delrin	5-3/8	3-3/8	2-1/4	3F2804B250001**	3F2304B250001**	3F2904B250001**
5	1-1/4	300	Delrin	6-1/4	3-15/16	2-1/2	3F0805B250001**	3F0305B250001**	3F0905B250001**
5	1-1/2	450	Delrin	6-3/8	3-15/16	2-3/4	3F2805B250001**	3F2305B250001**	3F2905B250001**
6	1-1/2	450	Delrin	7-3/8	4-7/16	3-1/4	3F2806B250001**	3F2306B250001**	3F2906B250001**
DURATEX WHEEL									
3	1-1/2	350	Roller	4-3/8	3-1/8	2-1/4	3F08034380801**	3F03034380801**	3F09034380801**
3(H)	1-1/2	300	Roller	4-3/8	3-1/8	2-1/4	3F08034340801**	3F03034340801**	3F09034340801**
4	1-1/2	450	Roller	5-3/8	3-3/8	2-3/4	3F28044380001**	3F23044380001**	3F29044380001**
4(H)	1-1/2	375	Roller	5-1/16	3-3/8	2-3/4	1F28044340001**	1F23044340001**	1F29044340001**
5	1-1/2	450	Roller	6-3/8	3-15/16	3-1/2	3F28054380001**	3F23054380001**	3F29054380001**
5(H)	1-1/2	400	Roller	6-1/16	3-15/16	3-1/2	1F28054340001**	1F23054340001**	1F29054340001**
6	1-1/2	450	Roller	7-3/8	4-7/16	4-1/4	3F28064380001**	3F23064380001**	3F29064380001**
SEMI-STEEL WHEEL									
3	1-1/4	450	Roller	4-3/8	2-15/16	2-3/4	3F08034110801**	3F03034110801**	3F09034110801**
4	1-1/2	450	Roller	5-3/8	3-3/8	3-3/4	3F28044110001**	3F23044110001**	3F29044110001**

** NOTE: For your plate or stem choice, replace ** in part number with plate or stem code number shown in top plate or stem choices.(H) Wheel is high-temperature phenolic with an operative range of 475°F continuous, 525°F intermittent.. Note: Swivel stem caster heights are 1/8" shorter than heights listed.

OPTIONS Consult Factory

- Higher optional height available for 4" and 5" casters with the smaller wheel width.
- Roller bearings available for all wheel widths.
- Ball bearings available for all the Poly II wheels except for the 3" size. Ball bearings not recommended for load capacities exceeding 250 lbs.
- Over-the-wheel strap brake available for all swivel casters (strap brakes are less effective on harder wheels).
- Dust cover available for all swivel caster sizes.
- Grease seals available for all swivel caster sizes (grease seals not recommended for high temperature applications).
- NSF certification is available for all casters.

Total-Lock



Available in 3", 4", 5" and 6" wheel sizes.
(Consult factory for information)

**** Plate Code Number** **Top Plate Choices**



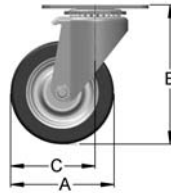
Overall Size: 2-3/4" x 3-3/4"
Hole Spacing: 1-3/4" x 3"
Hole Diameter: 11/32"
Bolt Diameter: 5/16"



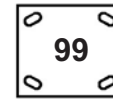
Overall Size: 2-3/4" x 3-3/4"
Hole Spacing: 1-3/4" x 2-5/8" to 3"
Hole Diameter: 11/32" x 1/2" slots
Bolt Diameter: 5/16"



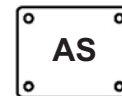
Overall Size: 3-1/8" x 4-1/8"
Hole Spacing: 1-3/4" x 3" to 2-3/8" x 3-3/8"
Hole Diameter: 3/8" x 3/4" slots
Bolt Diameter: 5/16"



Overall Size: 3-1/8" x 4-1/8"
Hole Spacing: 2-3/8" x 3-7/16"
Hole Diameter: 11/32"
Bolt Diameter: 5/16"



Overall Size: 3-3/4" x 4-5/8"
Hole Spacing: 2-5/8" x 3-5/8" to 3" x 3"
Hole Diameter: 3/8" x 3/4" slots
Bolt Diameter: 5/16"



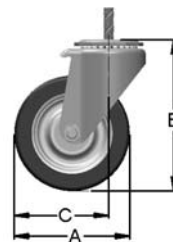
Overall Size: 4" x 5"
Hole Spacing: 3" x 4"
Hole Diameter: 13/32"
Bolt Diameter: 3/8"
AS top plate is for swivel casters only.

Stem Choices

Friction Ring Stems



Stem Size Dia. x Length (D) x (L)	** Stem Code Number
7/16 x 1-3/8	01
7/16 x 1-29/32	03
5/8 x 2-3/16	ZW
13/16 x 1-3/4	37



Threaded Stems



Stem Size Dia. -TPI x Length (D) (TPI) x (L)	** Stem Code Number
3/8- 16 x 1	04
3/8- 16 x 1-1/2	07
7/16-14 x 7/8	23
7/16-14 x 1-1/2	05
1/2- 13 x 3/4	06
1/2- 13 x 1	61
1/2- 13 x 1-1/2	10
1/2- 13 x 2-1/2	25

(expandable)

Octagon Stems



Stem Size Dia. x Length (D) x (L)	Hole Size	Hole Location (A)	Hole Location (E)	** Stem Code Number
.750 x 2	3 @ .265"	1"	.375"	74
.860 x 2	1 @ .265"	1"	-	36

Other stem sizes available on request.