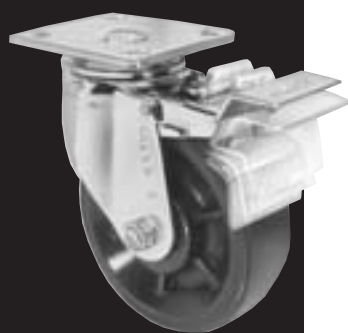


The Maxxy™ SERIES

900 CAPACITY
LBS

NEW



S6562C-A38H-U-PB-ALK



FEATURES

- KINGPIN:** 3/4" diameter heavy duty nut & bolt kingpin
- BALLS:** 5/16" diameter upper and lower hardened steel load bearings
- BUSHING:** Roller bearing with drilled hardened steel spanner bushing & plastic side washers
- AXLE & NUT:** 1/2" zerk axle & lock nut
- FINISH:** Corrosion resistant bright chrome finish
- LUBRICATION:** Grease nipple in swivel raceway
- HARDENED:** Yoke & washers
- SPECIAL:** One formed piece. No welding. Many special stems available. Custom plates & bolt hole spacing available. Thread guards and seal are standard. Cart washable. Virtually maintenance free.
- LEG SPACING:** 2 1/2"

Excellent for:

- Tow lines
- Stock carts and platform trucks
- Garbage bins
- Wire shelving units
- Hospitals
- Food industry
- Heavy service equipment
- Factory use

Options:

- ALK** Alock (wheel & swivel)
- AWK** Alock (wheel only)
- ASK** Alock (swivel only)
- TLB** Top Locking Brake (swivel & rigid)
- TG** Thread Guards
- Z** Zerk in Wheel
- DB** Delrin Bearing
- NB** Nylon Roller Bearing
- PB** Precision Ball Bearing
- SSW** Steel Wide Washers
- SWH** Steel Side Washers Hardened
- SB-7000-PO** Delrin Spanner Bushing
- 1PSL ALK1** 1 Position Swivel Lock
- 2PSL ALK2** 2 Position Swivel Lock
- 3PSL ALK3** 3 Position Swivel Lock
- 4PSL ALK4** 4 Position Swivel Lock
- DT** Drilled & Tapped Mounting Plates

Finish:

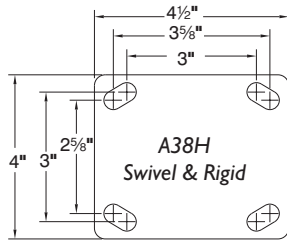
- Inquiries on other finishes welcome
- 65?1** Brass
 - 65?4** Black

WHEEL			CASTER			PART NUMBER		
Diameter	Tread Width	Bearing Type	Capacity Lbs.	Swivel Radius	Overall Height	Wheel Type	Swivel	Rigid
4"	2"	Roller	250	3 9/16"	5 5/8"	ProTech	S6542C-***-PRO-RB-TG	R6542C-***-PRO-RB-TG
		Roller	370			Moldon Rubber	S6542C-***-MR-RB-TG	R6542C-***-MR-RB-TG
		Precision	650			Envirothane	S6542C-***-U-PB-TG	R6542C-***-U-PB-TG
		Roller	650			Envirothane	S6542C-***-U-RB-TG	R6542C-***-U-RB-TG
		Roller	750			ALThane	S6542C-***-ALT-RB-TG	R6542C-***-ALT-RB-TG
		Roller	800			Moldon Poly. Urethane	S6542C-***-MPU-RB-TG	R6542C-***-MPU-RB-TG
		Roller	800			High Temp Phenolic (475°)	S6542C-***-HTPH-RB-TG	R6542C-***-HTPH-RB-TG
		Roller	800			Phenolic	S6542C-***-PH-RB-TG	R6542C-***-PH-RB-TG
		Roller	800			Moldon Urethane	S6542C-***-UR-RB-TG	R6542C-***-UR-RB-TG
		Roller	900			RollIX	S6542C-***-RX-RB-TG	R6542C-***-RX-RB-TG
Roller	900	Steel	S6542C-***-ST-RB-TG	R6542C-***-ST-RB-TG				
Roller	900	V Groove	S6542C-***-VG-RB-TG	R6542C-***-VG-RB-TG				
5"	2"	Roller	275	4 1/4"	6 1/2"	ProTech	S6552C-***-PRO-RB-TG	R6552C-***-PRO-RB-TG
		Ball	350			Balloon Cushion Rubber Grey	S6552C-***-BARG-BB-TG	R6552C-***-BARG-BB-TG
		Roller	470			Moldon Rubber	S6552C-***-MR-RB-TG	R6552C-***-MR-RB-TG
		Precision	800			Envirothane	S6552C-***-U-PB-TG	R6552C-***-U-PB-TG
		Roller	800			Envirothane	S6552C-***-U-RB-TG	R6552C-***-U-RB-TG
		Roller	900			Moldon Poly. Urethane	S6552C-***-MPU-RB-TG	R6552C-***-MPU-RB-TG
		Roller	900			ALThane	S6552C-***-ALT-RB-TG	R6552C-***-ALT-RB-TG
		Roller	900			High Temp Phenolic (475°)	S6552C-***-HTPH-RB-TG	R6552C-***-HTPH-RB-TG
		Roller	900			Phenolic	S6552C-***-PH-RB-TG	R6552C-***-PH-RB-TG
		Roller	900			Steel	S6552C-***-ST-RB-TG	R6552C-***-ST-RB-TG
		Roller	900			Moldon Urethane	S6552C-***-UR-RB-TG	R6552C-***-UR-RB-TG
		Roller	900			V Groove	S6552C-***-VG-RB-TG	R6552C-***-VG-RB-TG
		Roller	1000			RollIX	S6552C-***-RX-RB-TG	R6552C-***-RX-RB-TG

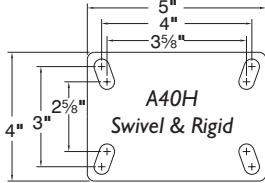
PLATE DIAGRAMS

STANDARD PLATE: A38H

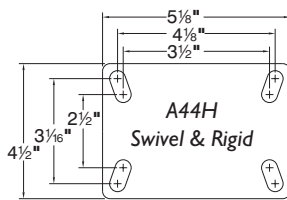
* Plate Thickness: 1/4"



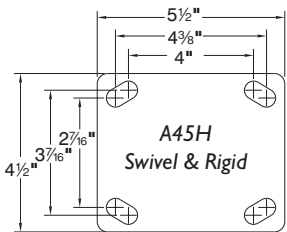
* Attaching Bolt Size For Plate 3/8"
(Formerly I25)



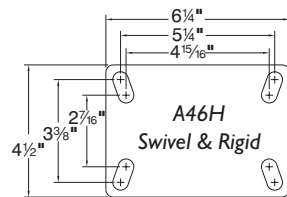
* Attaching Bolt Size For Plate 3/8"



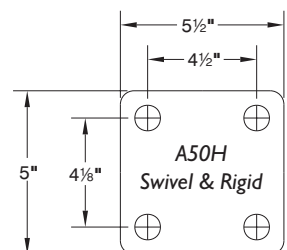
* Attaching Bolt Size For Plate 3/8"
(Formerly I25F)



* Attaching Bolt Size For Plate 1/2"



* Attaching Bolt Size For Plate 1/2"
(Formerly I25L)



* Attaching Bolt Size For Plate 1/2"
(Formerly I25E)

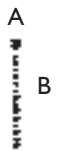
WHEEL			CASTER			PART NUMBER		
Diameter	Tread Width	Bearing Type	Capacity Lbs.	Swivel Radius	Overall Height	Wheel Type	Swivel	Rigid
6"	2"	Ball	350	5"	7 1/2"	Balloon Cushion Rubb Grey	S6562C-***-BARG-BB-TG	R6562C-***-BARG-BB-TG
		Roller	450			ProTech Flat Tread	S6562C-***-PROF-RB-TG	R6562C-***-PROF-RB-TG
		Roller	450			ProTech	S6562C-***-PRO-RB-TG	R6562C-***-PRO-RB-TG
		Roller	560			Moldon Rubber	S6562C-***-MR-RB-TG	R6562C-***-MR-RB-TG
		Roller	600			Moldon Alum. Rubber	S6562C-***-MAR-RB-TG	R6562C-***-MAR-RB-TG
		Roller	600			Moldon Alum. Urethane	S6562C-***-MAU-RB-TG	R6562C-***-MAU-RB-TG
		Roller	900			ALThane	S6562C-***-ALT-RB-TG	R6562C-***-ALT-RB-TG
		Roller	900			High Temp Phenolic (475°)	S6562C-***-HTPH-RB-TG	R6562C-***-HTPH-RB-TG
		Roller	900			Moldon Poly. Urethane	S6562C-***-MPU-RB-TG	R6562C-***-MPU-RB-TG
		Roller	900			Phenolic	S6562C-***-PH-RB-TG	R6562C-***-PH-RB-TG
		Precision	900			Steel	S6562C-***-ST-RB-TG	R6562C-***-ST-RB-TG
		Roller	900			Envirothane	S6562C-***-U-PB-TG	R6562C-***-U-PB-TG
		Roller	900			Envirothane	S6562C-***-U-RB-TG	R6562C-***-U-RB-TG
		Roller	900			Moldon Urethane	S6562C-***-UR-RB-TG	R6562C-***-UR-RB-TG
Roller	1200	V Groove	S6562C-***-VG-RB-TG	R6562C-***-VG-RB-TG				
Roller	1200	RollX	S6562C-***-RX-RB-TG	R6562C-***-RX-RB-TG				
8"	2"	Ball	450	6"	9 1/2"	Balloon Cushion Rubb Grey	S6582C-***-BARG-BB-TG	R6582-***-BARG-BB-TG
		Roller	600			ProTech	S6582C-***-PRO-RB-TG	R6582-***-PRO-RB-TG
		Roller	700			Moldon Alum. Rubber	S6582C-***-MAR-RB-TG	R6582-***-MAR-RB-TG
		Roller	700			Moldon Rubber	S6582C-***-MR-RB-TG	R6582-***-MR-RB-TG
		Roller	800			Moldon Alum. Urethane	S6582C-***-MAU-RB-TG	R6582-***-MAU-RB-TG
		Roller	900			ALThane	S6582C-***-ALT-RB-TG	R6582-***-ALT-RB-TG
		Roller	900			High Temp Phenolic (475°)	S6582C-***-HTPH-RB-TG	R6582-***-HTPH-RB-TG
		Roller	900			Moldon Poly. Urethane	S6582C-***-MPU-RB-TG	R6582-***-MPU-RB-TG
		Roller	900			Phenolic	S6582C-***-PH-RB-TG	R6582-***-PH-RB-TG
		Roller	900			Solid Steel (Crowned)	S6582C-***-SS-RB-TG	R6582-***-SS-RB-TG
		Roller	900			Steel	S6582C-***-ST-RB-TG	R6582-***-ST-RB-TG
		Precision	900			Envirothane	S6582C-***-U-PB-TG	R6582-***-U-PB-TG
		Roller	900			Envirothane	S6582C-***-U-RB-TG	R6582-***-U-RB-TG
		Roller	900			Moldon Urethane	S6582C-***-UR-RB-TG	R6582-***-UR-RB-TG
Roller	900	V Groove	S6582C-***-VG-RB-TG	R6582-***-VG-RB-TG				
Roller	1400	RollX	S6582C-***-RX-RB-TG	R6582-***-RX-RB-TG				

BOLT HOLE STEMS			
***	A	B	TYPE
3/8" X ANY	3/8"	ANY	NC
1/2" X ANY	1/2"	ANY	NC



STEMS

THREADED STEMS			
***	A	B	TYPE
1/2-13 X 4	1/2"	4"	NC
5/8-11 X 4	5/8"	4"	NC
3/4-10 X 4	3/4"	4"	NC
7/8-9 X 4	7/8"	4"	NC
1.000 -8 X 4	1"	4"	NC
ROUND STEMS			
***	A	B	TYPE
500 X 4	1/2"	4"	Plain
625 X 4	5/8"	4"	Plain
750 X 4	3/4"	4"	Plain
875 X 4	7/8"	4"	Plain
1.000 X 4	1"	4"	Plain



Threaded Stems:
S6500-1/2-13 X 4
S6500-5/8-11 X 4
S6500-3/4-10 X 4
S6500-7/8-9 X 4
S6500-1-8 X 4

A

B

Round Stems:
S6500-500 X 4
S6500-625 X 4
S6500-750 X 4
S6500-875 X 4
S6500-1.000 X 4