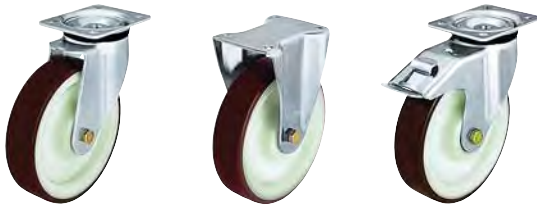


Series: LK-POTH, BK-POTH, BH-POTH

Pressed steel swivel and fixed castors, medium heavy duty brackets

 150 - 600 kg



Brackets: LK/BK/BH Series - Pressed from heavy sheet-steel, swivel bracket with double ball bearing in the reinforced swivel head, dynamically pressed in accordance with special Blicke procedure resulting in an extremely low swivel head play and a long service life, strong central kingpin (wheel Ø 150+200 mm) and swivel head sealing, bolted wheel axle, zinc-plated.

Top plate drawings: Page 71.
Detailed description: Page 63 and 76.

Wheels: POTH Series - Treads: Made of injection-moulded polyurethane, colour brown, non-marking, 98° shore A, non-staining, abrasion-resistant, floor-saving, low-noise operation, low rolling resistance, excellent positive and non-positive connection with the wheel centre.

Alternatively available with soft tread with improved skid resistance, colour grey, 92° shore A, refer to Variants / Accessories.

Wheel centres: Made of high-quality nylon, colour natural white, shock and impact-resistant, corrosion-resistant, plain, roller or ball bearing.
Detailed description: Page 202 and 43.

Swivel castors	Fixed castors	Swivel castors with "stop-fix" brake	Wheel Ø [mm]	Wheel width [mm]	Load capacity [kg]	Bearing version	Total height [mm]	Plate size [mm]	Bolt hole spacing [mm]	Bolt hole Ø [mm]	Offset swl castor [mm]
Ref. No.	Ref. No.	Ref. No.									
LK-POTH 75G	BK-POTH 75G	*	75	37	150	Plain bearing	108	100 x 85	80 x 60	9	40
LK-POTH 75R	BK-POTH 75R	*	75	37	150	Roller bearing	108	100 x 85	80 x 60	9	40
LK-POTH 100G-1	BK-POTH 100G-1	LK-POTH 100G-1-FI	100	35	200	Plain bearing	130	100 x 85	80 x 60	9	45
LK-POTH 100R-1	BK-POTH 100R-1	LK-POTH 100R-1-FI	100	35	200	Roller bearing	130	100 x 85	80 x 60	9	45
LK-POTH 100K-1	BK-POTH 100K-1	LK-POTH 100K-1-FI	100	35	200	Ball bearing	130	100 x 85	80 x 60	9	45
LK-POTH 100G-3	BK-POTH 100G-3	LK-POTH 100G-3-FI	100	35	200	Plain bearing	130	140 x 110	105 x 75-80	11	45
LK-POTH 100R-3	BK-POTH 100R-3	LK-POTH 100R-3-FI	100	35	200	Roller bearing	130	140 x 110	105 x 75-80	11	45
LK-POTH 100K-3	BK-POTH 100K-3	LK-POTH 100K-3-FI	100	35	200	Ball bearing	130	140 x 110	105 x 75-80	11	45
LK-POTH 125G-1	BK-POTH 125G-1	LK-POTH 125G-1-FI	125	35	250	Plain bearing	155	100 x 85	80 x 60	9	48
LK-POTH 125R-1	BK-POTH 125R-1	LK-POTH 125R-1-FI	125	35	250	Roller bearing	155	100 x 85	80 x 60	9	48
LK-POTH 125K-1	BK-POTH 125K-1	LK-POTH 125K-1-FI	125	35	250	Ball bearing	155	100 x 85	80 x 60	9	48
LK-POTH 125G-3	BK-POTH 125G-3	LK-POTH 125G-3-FI	125	35	250	Plain bearing	155	140 x 110	105 x 75-80	11	48
LK-POTH 125R-3	BK-POTH 125R-3	LK-POTH 125R-3-FI	125	35	250	Roller bearing	155	140 x 110	105 x 75-80	11	48
LK-POTH 125K-3	BK-POTH 125K-3	LK-POTH 125K-3-FI	125	35	250	Ball bearing	155	140 x 110	105 x 75-80	11	48
LK-POTH 150G	BH-POTH 150G	LK-POTH 150G-FI	150	40	400	Plain bearing	197	140 x 110	105 x 75-80	11	63
LK-POTH 150R	BH-POTH 150R	LK-POTH 150R-FI	150	40	400	Roller bearing	197	140 x 110	105 x 75-80	11	63
LK-POTH 150K	BH-POTH 150K	LK-POTH 150K-FI	150	40	400	Ball bearing	197	140 x 110	105 x 75-80	11	63
LK-POTH 200G	BH-POTH 200G	LK-POTH 200G-FI	200	50	600	Plain bearing	245	140 x 110	105 x 75-80	11	65
LK-POTH 200R	BH-POTH 200R	LK-POTH 200R-FI	200	50	600	Roller bearing	245	140 x 110	105 x 75-80	11	65
LK-POTH 200K	BH-POTH 200K	LK-POTH 200K-FI	200	50	600	Ball bearing	245	140 x 110	105 x 75-80	11	65

* For the "stop-top" brake version, refer to Variants / Accessories.

Variants / Accessories



	With soft tread, 92° shore A, non-marking grey	With pressed steel thread guard, zinc-plated	With "stop-top" brake	With "ideal-stop" brake ttl. height + 17mm**	With directional lock (retro fit)*** 1 x 360°	With directional lock (retro fit)*** 1 x 360°	With stainless steel axle tube (-XA) or bearing (-XR, -XK)
Technical description page	43	79	77	77	78	78	79 + 57
Ref. No. extension	-WE	-FA	-ST	-IS	RI-03.03	RI-05.03	-XA, -XR, -XK
Available for wheel Ø [mm]	Upon request	100 - 200	All sizes	200	100 + 125 plate 140x110	150 + 200	Upon request

** Matching synthetic adapter plate for total height compensation for swivel and fixed castors without "ideal-stop" brake: Ref. No. AP3.

*** Only for swivel castors without brake.