

# ACP-200

● LIGHT DUTY PURPOSE



F-Type



S-Type

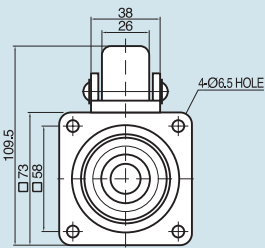


F-Type

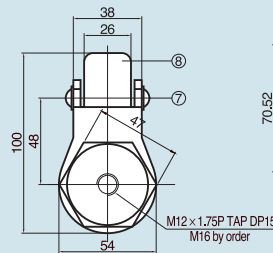
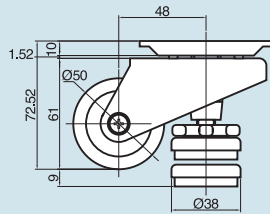


S-Type

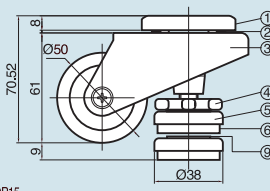
- Maximum Load Capacity with 1 Caster - **220 Lbs.**
- Recommended Load Capacity with 4 Casters - **880 Lbs.**
- Weight - **F-Type- 1.23 Lbs.**  
**S-Type - 1.15 Lbs.**



"F" Type



"S" Type



\*Measurement in mm (Millimeter)

	Parts	Materials	Treatments
①	Top plate	SPC	No2 & Zn Galvanized
②	Ball	STB2	Ni-Cr
③	Frame	SPC	No2 & Zn Galvanized
④	Leveler (M-10)	SM45C	No2 & Zn Galvanized
⑤	Cup	SPC	No2 & Zn Galvanized

	Parts	Materials	Treatments
⑥	Foot	N.B.R.	Black
⑦	Pin	SM45C	No2 & Zn Galvanized
⑧	Wheel	Nylon-6	Black
⑨	Washer	PE	White

DESIGN

DIMENSIONS (unit=mm)

MATERIALS