

ACM-600F, ACMT-600F

MEDIUM DUTY PURPOSE

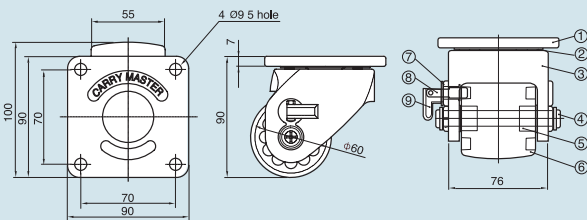


ACM-600F Brake Type

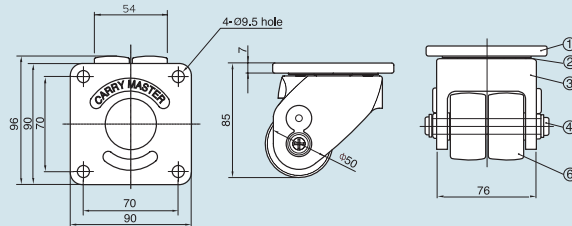


ACMT-600F Type

- Maximum Load Capacity with 1 Castor - **881 Lbs.**
- Recommended Load Capacity with 4 Casters - **3,527 Lbs.**
- Weight - **Brake-Type 2.51 Lbs.**
Non-Brake-Type 2.23 Lbs.



ACM-600 Brake Type



ACMT-600 Type

*Measurement in mm (Millimeter)

	Parts	Materials	Treatments
①	Top plate	SM45C	Zn Galvanized
②	Ball	STB2	Ni-Cr
③	Frame	ADC8	Ivory, Ni-Cr
④	Pin	SM45C	Zn
⑤	Bearing	HK1212	

	Parts	Materials	Treatments
⑥	Wheel	Nylon-6	Black
⑦	Spring	SWP3	Ni
⑧	Brake	SUM24L	Ni
⑨	Handle	SUS304	Black

DESIGN

DIMENSIONS (unit=mm)

MATERIALS

ACM-800F, ACMT-800F

MEDIUM DUTY PURPOSE

DESIGN



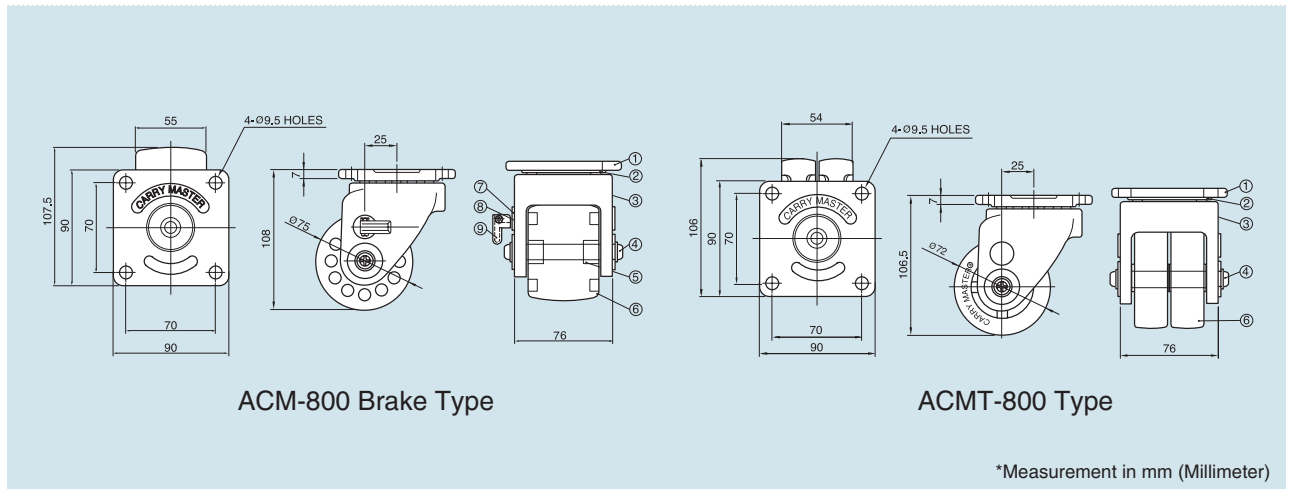
ACM-800F Brake Type



ACMT-800F Type

- Maximum Load Capacity with 1 Castor - **1,100 Lbs.**
- Recommended Load Capacity with 4 Casters - **4,400 Lbs.**
- Weight - **Brake Type- 2.56 Lbs.**
Non-Brake Type- 2.95 Lbs.

DIMENSIONS (unit=mm)



ACM-800 Brake Type

ACMT-800 Type

*Measurement in mm (Millimeter)

MATERIALS

	Parts	Materials	Treatments
①	Top plate	SM45C	Zn Galvanized
②	Ball	STB2	Ni-Cr
③	Frame	ADC8	Ivory, Ni-Cr
④	Pin	SM45C	Zn
⑤	Bearing	HK1212	

	Parts	Materials	Treatments
⑥	Wheel	Nylon-6	Black
⑦	Spring	SWP3	Ni
⑧	Brake	SUM24L	Ni
⑨	Handle	SUS304	Black

ALC-1000, ALCT-1000F

MEDIUM DUTY PURPOSE

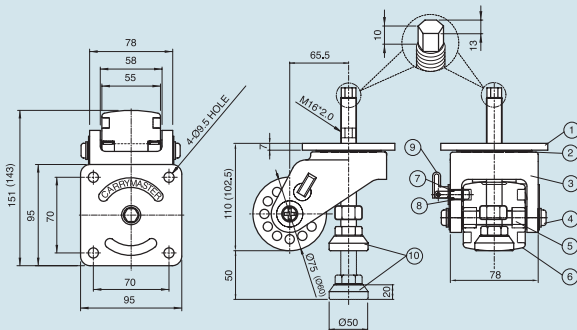


ALC-1000F Brake Type

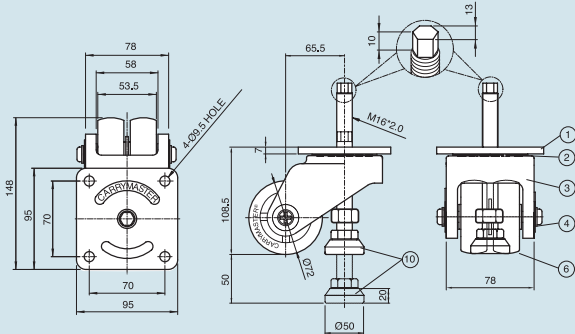


ALCT-1000F Type

- Maximum Load Capacity with 1 Caster - **1,100 Lbs.**
- Recommended Load Capacity with 4 Casters - **4,410 Lbs.**
- Weight - **ALC-Type 4.51 Lbs.**
ALCT-Type 4.18 Lbs.



ALC-1000F Type



ALCT-1000F Type

*Measurement in mm (Millimeter)

Parts	Materials	Treatments
① Top plate	SM45C	Zn
② Ball	STB2	Ni-Cr
③ Frame	ADC8	Ivory, Ni-Cr
④ Pin	SM45C	Zn
⑤ Bearing	6301Z	

Parts	Materials	Treatments
⑥ Wheel	Nylon-6	Black
⑦ Spring	SWP3	Ni
⑧ Brake	SUM24L	Ni
⑨ Handle	SUS304	Black
⑩ Foot	Zn	Ni

DESIGN

DIMENSIONS (unit=mm)

MATERIALS

APLC-700F, APLC-200F

MEDIUM DUTY PURPOSE

DESIGN



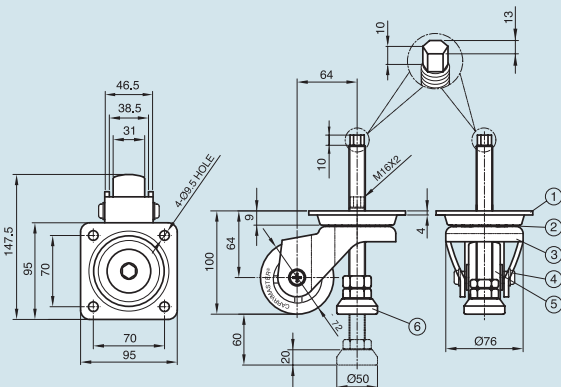
APLC-700F Type



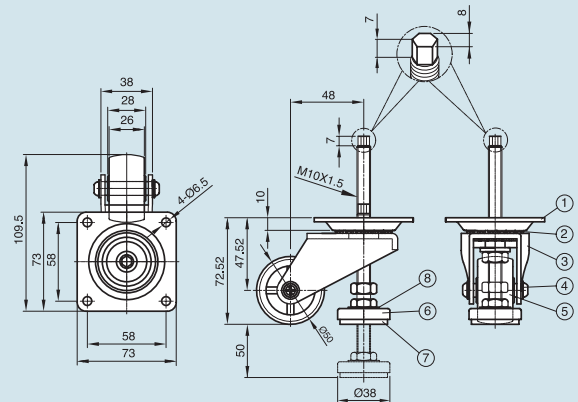
APLC-200F Type

- Maximum Load Capacity with 1 Caster - APLC-700F: **772 Lbs.** APLC-200F: **220 Lbs.**
- Recommended Load Capacity with 4 Casters - APLC-700F: **3,086 Lbs.** APLC-200F: **880 Lbs.**
- Weight - **APLC-700F - 3.35 Lbs.**
APLC-200F - 1.23 Lbs.

DIMENSIONS (unit=mm)



APLC-700 Type



APLC-200 Type

*Measurement in mm (Millimeter)

MATERIALS

	Parts	Materials	Treatments
①	Top plate	SPC4T	Zn
②	Ball	STB2	Ni-Cr
③	Frame	SPC4.5T	Zn
④	Pin	SM45C	Zn
⑤	Wheel	Nylon-6	Black
⑥	Foot	Zn	

	Parts	Materials	Treatments
①	Top plate	SPC3T	Zn
②	Ball	STB2	Ni-Cr
③	Frame	SPC4T	Zn
④	Pin	SM45C	Zn
⑤	Wheel	Nylon-6	Black
⑥	Cup	SPC	Zn
⑦	Foot	NBR	Black
⑧	Washer	PE	White