



FEATURES

Swivel Section: The hot forged, SAE 1045 steel swivel section features a precision machined 3-1/4" diameter load race with 7/16" ball bearings.

Kingpin: 3/4" integrally forged as part of the top plate with fully machined raceways and slotted adjusting nut

Legs: 1/4" x 2" bar continuously welded inside and outside to the yoke base

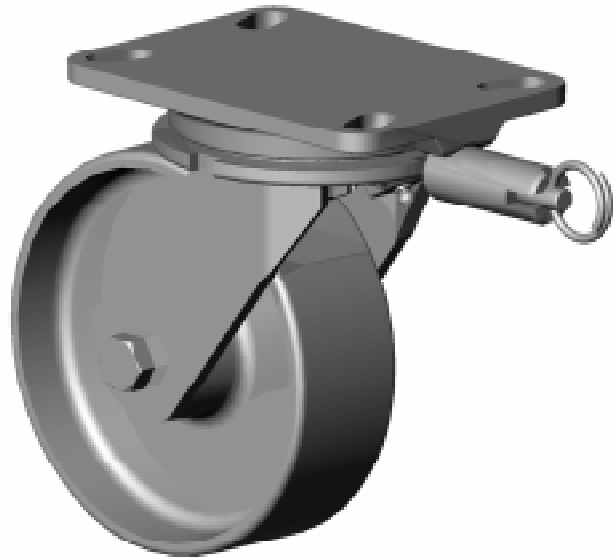
Axle: 1/2" diameter axle

Lubrication: Pre-lubricated before shipping

Wheels: 4" to 8" wheels

Finish: Water-based acrylic gray paint

Standard: Notched yoke base for field installation of swivel locks.



60-06201-20-1 with optional four position swivel lock

BENEFITS

The 60 Series hot forged casters are heavier and stronger than cold forged casters. Additionally, the precision machined raceways have longer wearing characteristics. Available with a wide variety of options, these heavy duty casters are excellent for in-plant equipment.

APPLICATIONS

Excellent for parts bins, towline carts, dough troughs, automated vehicles, production racks and fixtures, pan trucks, conveyor systems and other heavy duty applications.

OPTIONS

Brakes

Cam:	CB-60
Poly Cam:	PCB-60*
Tread Lock:	TLB-60
Wrap Around:	WAB-60
Dual Side:	DSB-60

Swivel Locks

Factory Installed:	SL-60
Demountable:	DSL-60

Sealed Swivel: SS-60

Sealed Wheel: WS

Toe Guard

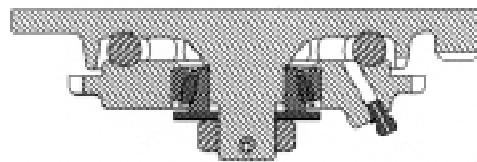
TG-60

Precision Tapered Thrust Bearings (68 Series)

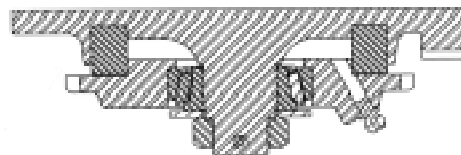
Precision Tapered Load & Trust Bearings (69 Series)

*For wheels with diameter ≥ 6 inches

68 Series Cross Sectional View



69 Series Cross Sectional View





CASTER CONCEPTS

60 SERIES HEAVY DUTY CASTERS

1500 maximum capacity LBS

60 SERIES HEAVY DUTY CASTERS 1500 lbs maximum capacity

WHEEL			CAPACITY				PART NUMBER		
Dia.	Width	Material	Roller Bearing	Precision Ball	OAH	Swivel Lead	Roller Bearing	Precision Ball	Wt.
4	1.5	Forged Steel	1,400	1,400	5.62	1.50	60-04101-20-1	60-04109-20-1†	7.25
4	2.0	Phenolic Resin	800		5.62	1.50	60-04201-30-1		7.50
4	2.0	Cast Iron	1,000		5.62	1.50	60-04201-10-1		7.50
4	2.0	Polyurethane	700	700	5.62	1.50	60-04201-60-1	60-04204-60-1	7.50
4	2.0	Soft Polyurethane	600	600	5.62	1.50	60-04201-66-1	60-04202-66-1	7.50
4	2.0	Envirothane	650	650	5.62	1.50	60-04201-62-1	60-04202-62-1	7.50
4	2.0	Mold on Rubber	350		5.62	1.50	60-04201-70-1		8.20
4	2.0	Softech	250	250	5.62	1.50	60-04201-72-1	60-04204-72-1*	8.00
5	2.0	Forged Steel	1,500	1,500	6.50	1.75	60-05201-20-1	60-05209-20-1†	10.20
5	2.0	Cast Iron	1,200		6.50	1.75	60-05201-10-1		9.20
5	2.0	Phenolic Resin	1,000		6.50	1.75	60-05201-30-1		8.50
5	2.0	Polyurethane	1,050	1,050	6.50	1.75	60-05201-60-1	60-05204-60-1	10.00
5	2.0	T/R Compound	850	850	6.50	1.75	60-05201-61-1	60-05204-61-1	10.00
5	2.0	Envirothane	800	800	6.50	1.75	60-05201-62-1	60-05202-62-1	7.50
5	2.0	Mold on Rubber	400		6.50	1.75	60-05201-70-1		10.00
5	2.0	Softech	275	275	6.50	1.75	60-05201-72-1	60-05204-72-1*	10.00
6	2.0	Forged Steel	1,500	1,500	7.50	2.25	60-06201-20-1	60-06209-20-1†	13.50
6	2.0	Cast Iron	1,200		7.50	2.25	60-06201-10-1		13.00
6	2.0	Phenolic Resin	1,200		7.50	2.25	60-06201-30-1		9.50
6	2.0	Polyurethane	1,200	1,200	7.50	2.25	60-06201-60-1	60-06202-60-1	12.00
6	2.0	T/R Compound	1,000	1,000	7.50	2.25	60-06201-61-1	60-06202-61-1	12.00
6	2.0	Solid Elastomer	950	950	7.50	2.25	60-06201-62-1	60-06202-62-1	12.00
6	2.0	Mold on Rubber	425		7.50	2.25	60-06201-70-1		12.00
6	2.0	Softech	450	450	7.50	2.25	60-06201-72-1	60-06204-72-1*	12.00
8	2.0	Cast Iron	1,500		10.12	2.25	60-08201-10-1		16.50
8	2.0	Phenolic Resin	1,400		10.12	2.25	60-08201-30-1		12.00
8	2.0	Polyurethane	1,500	1,500	10.12	2.25	60-08201-60-1	60-08202-60-1	14.00
8	2.0	T/R Compound	1,200	1,200	10.12	2.25	60-08201-61-1	60-08202-61-1	14.00
8	2.0	Solid Elastomer	1,300	1,300	10.12	2.25	60-08201-62-1	60-08202-62-1	14.00
8	2.0	Mold on Rubber	500		10.12	2.25	60-08201-70-1		14.00
8	4.0	Softech	600	600	10.12	2.25	60-08201-72-1	60-08204-72-1*	14.00

Capacity listed is for manual operation. For powered operations, consult factory.
 Part Numbers listed are for the swivel caster. For rigid casters, change the last digit from 1 to 2 (i.e. 60-06201-60-2)
 Estimated weight is for swivel caster. Deduct 20 percent of swivel caster weight for rigid casters.
 † This caster has tapered roller bearings
 * This caster has anular ball bearing

All dimensions are in inches. All weights are in pounds.

For tapered thrust bearings, change the first two digits to 68 (i.e. 68-08202-62-1)
 For tapered load and thrust bearings, change the first 2 digits to 69 (i.e. 69-08202-62-1)

Top Plate Size	Bolt Hole Spacing	Bolt Diameter
Std: 4.5 x 6.25	2.438 x 4.938 Slotted to 3.375 x 5.25	0.50

60 Series Cross Sectional View

