



FEATURES

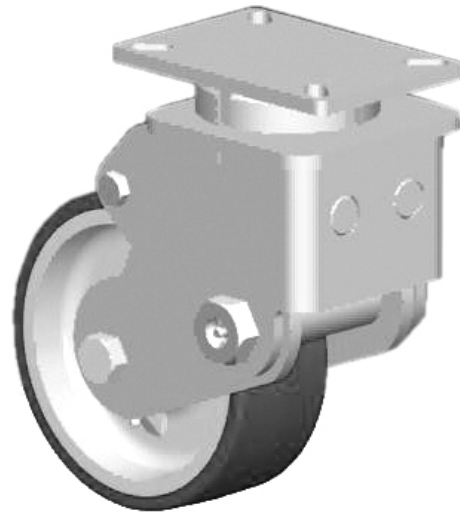
Our popular shock absorbing casters have swivel sections that are constructed of high alloy steel and are precision machined for close tolerances and long life. These casters feature legs of thick section plate steel. Integrally forged kingpins are available from 3/4" to 1-1/4" in diameter. In normal configurations, these swivel sections will carry 3 to 4 times their listed capacity.

BENEFITS

The high strength chrome vanadium springs provide longer life through constant flexing and compressing. The spring compression starts with as little as 25 pounds loading per caster resulting in cushioned loads and quiet empty returns. The long swivel lead reduces excessive shimmy and vibration while towing.

OPTIONS

Special non-catalog sizes and designs are available. Swivel locks and face contact brakes are available, consult factory.



73-08309-60-1 shown

APPLICATIONS

Shock absorbing casters are ideal for jet engine dollies, aircraft jacks, in-plant trailers, trash gondolas, lift truck stabilizer casters, revolving signs and parade floats.

WHEEL			CAPACITY		PART NUMBER					
Dia.	Width	Material	Roller Bearing	Tapered	OAH	Swivel Lead	Straight Roller	Precision Tapered	Series	Wt.
4	2.00	Polyurethane	500		7.31	1.75	53-04201-60-1		50	13.0
4	2.00	Mold on Rubber	400		7.31	1.75	53-04201-71-1		50	13.0
4	2.00	Phenolic Resin	500		7.31	1.75	53-04201-30-1		50	12.0
5	2.00	Polyurethane	500		7.81	1.75	53-05201-60-1		50	13.0
5	2.00	Mold on Rubber	400		7.81	1.75	53-05201-71-1		50	13.0
5	2.00	Phenolic Resin	500		7.81	1.75	53-05201-30-1		50	12.0
6	2.00	Polyurethane	500		9.25	2.25	53-06201-60-1		50	15.0
6	2.00	Mold on Rubber	425		9.25	2.25	53-06201-71-1		50	15.0
6	2.00	Phenolic Resin	500		9.25	2.25	53-06201-30-1		50	13.0
8	2.00	Polyurethane	500		11.63	3.25	53-08201-60-1		50	16.0
8	2.00	Mold on Rubber	500		11.63	3.25	53-08201-71-1		50	16.0
8	2.00	Phenolic Resin	500		11.63	3.25	53-08201-30-1		50	13.0
5	2.00	Polyurethane	400		7.50	2.75	63-05201-60-1		60	13.0
5	2.00	Mold on Rubber	400		7.50	2.75	63-05201-71-1		60	13.0
5	2.00	Phenolic Resin	400		7.50	2.75	63-05201-30-1		60	11.0
6	2.00	Polyurethane	500		8.50	2.38	63-06201-60-1		60	15.0
6	2.00	Mold on Rubber	500		8.50	2.38	63-06201-71-1		60	15.0
6	2.00	Phenolic Resin	500		8.50	2.38	63-06201-30-1		60	13.0
8	2.00	Polyurethane	500		10.50	3.50	63-08201-60-1		60	16.0
8	2.00	Mold on Rubber	410		10.50	3.50	63-08201-71-1		60	16.0
8	2.00	Phenolic Resin	500		10.50	3.50	63-08201-30-1		60	13.0

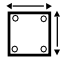
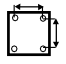



WHEEL		CAPACITY		PART NUMBER						
Dia.	Width	Material	Roller	Tapered	OAH	Swivel Lead	Straight Roller	Precision Tapered	Series	Wt.
6	2.50	Polyurethane	800	800	9.50	3.63	67-06255-60-1	67-06257-60-1	65	27.0
6	2.50	Mold on Rubber	670	670	9.50	3.63	67-06255-70-1	67-06257-70-1	65	26.0
6	2.50	Phenolic Resin	800	800	9.50	3.63	67-06255-30-1	67-06257-30-1	65	18.0
8	2.50	Polyurethane	800	800	11.50	4.00	67-08255-60-1	67-08257-60-1	65	25.0
8	2.50	Mold on Rubber	670	670	11.50	4.00	67-08255-70-1	67-08257-70-1	65	25.0
8	2.50	Phenolic Resin	800	800	11.50	4.00	67-08255-30-1	67-08257-30-1	65	20.0
10	2.50	Polyurethane	800	800	14.00	5.50	67-10255-60-1	67-10257-60-1	65	32.0
10	2.50	Mold-on rubber	800	800	14.00	5.50	67-10255-70-1	67-10257-70-1	65	27.0
10	2.50	Phenolic Resin	800	800	14.00	5.50	67-10255-30-1	67-10257-30-1	65	22.0
6	3.00	Polyurethane	1,100	1,100	10.00	4.00	73-06301-60-1	73-06309-60-1	70	35.0
6	3.00	Mold on Rubber	700	700	10.00	4.00	73-06301-70-1	73-06309-70-1	70	34.0
6	3.00	Phenolic Resin	1,100	1,100	10.00	4.00	73-06301-30-1	73-06309-30-1	70	28.0
8	3.00	Polyurethane	1,100	1,100	12.00	4.00	73-08301-60-1	73-08309-60-1	70	38.0
8	3.00	Mold on Rubber	850	850	12.00	4.00	73-08301-70-1	73-08309-70-1	70	38.0
8	3.00	T/R Compound Soft Poly	1,100	1,100	12.00	4.00	73-08301-66-1	73-08309-66-1	70	32.0
10	3.00	Polyurethane	1,100	1,100	13.50	5.50	73-10301-60-1	73-10309-60-1	70	45.0
10	3.00	Mold on Rubber	1,100	1,100	13.50	5.50	73-10301-70-1	73-10309-70-1	70	42.0
10	3.00	T/R Compound Soft Poly	1,100	1,100	13.50	5.50	73-10301-66-1	73-10309-66-1	70	38.0
8	3.00	Polyurethane	1,700	1,700	12.00	4.00	83-08301-60-1	83-08309-60-1	80	58.0
8	3.00	Mold on Rubber	825	825	12.00	4.00	83-08301-70-1	83-08309-70-1	80	58.0
8	3.00	T/R Compound Soft Poly	1,700	1,700	12.00	4.00	83-08301-66-1	83-08309-66-1	80	48.0
10	3.00	Polyurethane	1,700	1,700	14.50	4.50	83-10301-60-1	83-10309-60-1	80	65.0
10	3.00	Mold on Rubber	1,000	1,000	14.50	4.50	83-10301-70-1	83-10309-70-1	80	55.0
10	3.00	T/R Compound Soft Poly	1,700	1,700	14.50	4.50	83-10301-66-1	83-10309-66-1	80	50.0
12	3.00	Polyurethane	1,500	1,500	17.00	5.50	83-12301-60-1	83-12309-60-1	80	65.0
12	3.00	Mold on Rubber	1,150	1,150	17.00	5.50	83-12301-70-1	83-12309-70-1	80	62.0
12	3.00	Phenolic Resin	1,500	1,500	17.00	5.50	83-12301-30-1	83-12309-30-1	80	64.0
10	4.00	Polyurethane	4,000	4,000	16.25	3.50		93-10409-60-1	91	100.0
10	4.00	Forged Steel	4,000	4,000	16.25	3.50		93-10409-20-1	91	110.0
10	5.00	Polyurethane	4,000	4,000	16.25	3.50		93-10509-65-1	91	110.0

SUPER DUTY SHOCK ABSORBING DUAL WHEEL CASTERS

10	5.00	Polyurethane	8,000	16.25	3.50	2-93-10509-65-1	91	250.0
18	5.00	Polyurethane	20,000	25.50	4.50	103-18509-65-1	91	400.0

Capacity listed is for manual operation. For powered operations, consult factory.
 Part Numbers listed are for the swivel casters. For rigid casters, change the last digit from 1 to 2 (i.e. 83-12309-30-2)
 Estimated weight is for swivel caster. Deduct 20 percent of swivel caster weight for rigid casters.
 All dimensions are in inches. All weights are in pounds.

	 Top Plate Size	 Bolt Hole Spacing	 Bolt Diameter
STD 53	4.0 x 5.0	2.625 x 3.625 Slotted to 3.0 x 3.0	0.375
STD 63/67	4.5 x 6.25	2.438 x 4.938 Slotted to 3.375 x 5.25	0.5
STD 73	5.0 x 7.25	3.375 x 5.25 Slotted to 4.125 x 6.125	0.5
STD 83	6.0 x 7.5	4.5 x 6.0	0.5
STD 93	8.5 x 8.5	7.0 x 7.0	0.625



FEATURES

Vertical mounted spring (VMS) casters offer the highest flexibility in design. Each caster features springs that are retained on threaded rod ends for pre-load capabilities. Pre-loading the caster causes the caster to stand strong to a predetermined load before any deflection.

The VMS caster can be built with standard components and varying capacities by simply changing out the springs.



94-10409-60-1 shown

OPTIONS

Available with dual wheels and pneumatic tires.

Swivel locks and face contact brakes are available, consult factory.

APPLICATIONS

VMS casters are ideal for jet engine dollies, aircraft jacks, in-plant trailers, trash gondolas, lift truck stabilizer casters, revolving signs and parade floats.

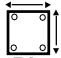
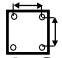

WHEEL		CAPACITY			PART NUMBER				
Dia.	Width	Material	Roller Bearing	OAH	Swivel Lead	Straight Roller	Precision Tapered	Series	Wt.
6	2.00	Polyurethane	500	8.50	2.30	34-06201-60-1		30	14.0
6	2.00	Phenolic Resin	500	8.50	2.30	34-06201-30-1		30	9.5
6	2.00	Mold on Rubber	425	8.50	2.30	34-06201-70-1		30	9.0
6	2.00	T/R Compound	500	8.50	2.30	34-06201-61-1		30	14.0
8	2.00	Polyurethane	500	9.75	1.75	34-08201-60-1		30	16.0
8	2.00	Phenolic Resin	500	9.75	1.75	34-08201-30-1		30	11.0
8	2.00	Mold On Rubber	425	9.75	1.75	34-08201-70-1		30	11.0
8	2.00	T/R Compound	500	9.75	1.75	34-08201-61-1		30	16.0
6	2.00	Polyurethane	500	8.50	1.75	54-06201-60-1		50	16.0
6	2.00	Phenolic Resin	500	8.50	1.75	54-06201-30-1		50	12.0
6	2.00	Mold on Rubber	425	8.50	1.75	54-06201-70-1		50	11.5
6	2.00	T/R Compound	500	8.50	1.75	54-06201-61-1		50	16.0
8	2.00	Polyurethane	500	10.50	1.75	54-08201-60-1		50	18.0
8	2.00	Phenolic Resin	500	10.50	1.75	54-08201-30-1		50	13.0
8	2.00	Mold on Rubber	425	10.50	1.75	54-08201-70-1		50	13.0
8	2.00	T/R Compound	500	10.50	1.75	54-08201-61-1		50	18.0
8	2.50	Polyurethane	800	11.50	2.25	64-08255-60-1		60	23.0
8	2.50	Phenolic Resin	800	11.50	2.25	64-08255-30-1		60	20.0
8	2.50	Mold on Rubber	700	11.50	2.25	64-08255-70-1		60	25.0
8	2.50	T/R Compound	800	11.50	2.25	64-08255-61-1		60	23.0
10	2.50	Polyurethane	800	13.50	2.25	64-10255-60-1		60	32.0
10	2.50	Phenolic Resin	800	13.50	2.25	64-10255-30-1		60	22.0
10	2.50	Mold on Rubber	700	13.50	2.25	64-10255-70-1		60	32.0
10	2.50	T/R Compound	800	13.50	2.25	64-10255-61-1		60	32.0

Hc`d`UW`Ub`cfXYf`cf`Zf`ei`Yghjcbgzd`YUgYWU``%,\$\$!&?!,&&\$



WHEEL		CAPACITY			PART NUMBER				
Dia.	Width	Material	Roller Bearing	OAH	Swivel Lead	Straight Roller	Precision tapered	Series	Wt.
8	3.00	Polyurethane	1,500	11.50	3.00	74-08301-60-1	74-08309-60-1	70	44.0
8	3.00	Phenolic Resin	1,500	11.50	3.00	74-08301-30-1	74-08309-30-1	70	35.0
8	3.00	Mold on Rubber	850	11.50	3.00	74-08301-70-1	74-08309-70-1	70	45.0
8	3.00	T/R Compound	1,500	11.50	3.00	74-08301-66-1	74-08309-66-1	70	45.0
10	3.00	Polyurethane	1,500	13.50	3.00	74-10301-60-1	74-10309-60-1	70	49.0
10	3.00	Phenolic Resin	1,500	13.50	3.00	74-10301-30-1	74-10309-30-1	70	39.0
10	3.00	Mold On Rubber	1,000	13.50	3.00	74-10301-70-1	74-10309-70-1	70	49.0
10	3.00	T/R Compound	1,500	13.50	3.00	74-10301-66-1	74-10309-66-1	70	49.0
12	3.00	Polyurethane	1,500	15.50	3.00	74-12301-60-1	74-12309-60-1	70	58.0
12	3.00	Phenolic Resin	1,500	15.50	3.00	74-12301-30-1	74-12309-30-1	70	43.0
12	3.00	Mold on Rubber	1,000	15.50	3.00	74-12301-70-1	74-12309-70-1	70	52.0
12	3.00	T/R Compound	1,500	15.50	3.00	74-12301-66-1	74-12309-66-1	70	62.0
8	3.00	Polyurethane	2,500	11.50	3.00	84-08301-60-1	84-08309-60-1	80	50.0
8	3.00	Phenolic Resin	2,500	11.50	3.00	84-08301-30-1	84-08309-30-1	80	42.0
8	3.00	Mold on Rubber	850	11.50	3.00	84-08301-70-1	84-08309-70-1	80	47.0
8	3.00	T/R Compound	2,500	11.50	3.00	84-08301-66-1	84-08309-66-1	80	55.0
10	3.00	Polyurethane	2,500	13.50	4.00	84-10301-60-1	84-10309-60-1	80	59.0
10	3.00	Phenolic Resin	2,500	13.50	4.00	84-10301-30-1	84-10309-30-1	80	46.0
10	3.00	Mold on Rubber	1,000	13.50	4.00	84-10301-70-1	84-10309-70-1	80	60.0
12	3.00	Polyurethane	2,500	15.50	4.00	84-12301-60-1	84-12309-60-1	80	67.0
12	3.00	Phenolic Resin	2,500	15.50	4.00	84-12301-30-1	84-12309-30-1	80	56.0
12	3.00	Mold on Rubber	1,150	15.50	4.00	84-12301-70-1	84-12309-70-1	80	65.0
12	3.00	T/R Compound	2,500	15.50	4.00	84-12301-66-1	84-12309-66-1	80	70.0
10	4.00	Polyurethane	3,800	13.50	4.00	94-10401-60-1	94-10409-60-1	90	70.0
10	4.00	Mold on Rubber	1,500	13.50	4.00	94-10401-70-1	94-10409-70-1	90	77.0
10	4.00	HD Polyurethane	3,800	13.50	4.00	94-10401-65-1	94-10409-65-1	90	79.0
12	4.00	Polyurethane	3,800	15.50	4.00	94-12401-65-1	94-12409-65-1	90	86.0
12	4.00	Mold on Rubber	1,600	15.50	4.00	94-12401-70-1	94-12409-70-1	90	86.0
12	4.00	T/R Compound	3,800	15.50	4.00	94-12401-66-1	94-12409-66-1	90	86.0

All dimensions are in inches. All weights are in pounds.

	 Top Plate Size	 Bolt Hole Spacing	 Bolt Diameter
STD 34	4.0 x 4.5	2.625 x 3.625 Slotted to 3.0 x 3.0	0.375
STD 54	4.0 x 5.0	2.625 x 3.625 Slotted to 3.0 x 3.0	0.375
STD 64	4.5 x 6.25	2.438 x 4.938 Slotted to 3.375 x 5.25	0.5
STD 74	5.25 x 7.25	3.375 x 5.25 Slotted to 4.125 x 6.125	0.5
STD 84	6.0 x 7.5	4.5 x 6.0	0.5
STD 94	8.5 x 8.5	7.0 x 7.0	0.625