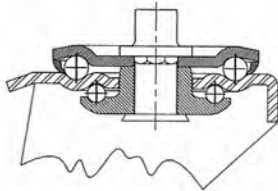


Post Stem Casters

FEATURES

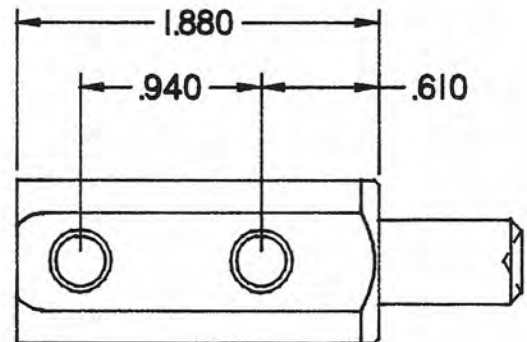
- Double Ball Bearing Raceway Construction
- Nut & Bolt Assembly
- Friction Brakes
- Zinc Plated Finish standard



Full Annular Double Ball Raceways

All swivel casters feature separate, full-annular contact, and upper and lower bearing races. This construction provides maximum strength, mobility and a smooth, quiet operation.

				Load Capacity	Wheel Type	Caster Part Number	STD	Caster with Brake Part Number	STD		Swivel Radius	Offset
5"	15/16"	49/64"	Round Post w/ Ring	135 lbs.	Soft Rubber	99001-50RM-23A2	*	94001-50RM-23A2	*	5-9/16"	4-1/32"	1-1/2"



				Load Capacity	Wheel Type	Caster Part Number	STD	Caster with Brake Part Number	STD		Swivel Radius	Offset
5"	15/16"	7/8"	Square w/ Cross Hole	135 lbs.	Soft Rubber	99001-50KG-23CS		94001-50KG-23CS		5-9/16"	4-1/32"	1-1/2"

* Please inquire for additional caster variations.