

1-800-215-8220

50mm Twin Wheel Casters

2"
LOAD CAPACITY
75LBS. - 200LBS.

ITW'S 50mm twin wheel casters are constructed of high quality nylon. The full hood twin wheel design provides a clean, contemporary look for many applications.



Furniture Twin wheel Plastic - Full Hood

Gemini I: 2" Diameter twin wheel casters

Black (All Plastic)

Load Capacity: Mobile: 75 lbs. Static: 200 lbs.

Mounting Height: 2⁵/₁₆"

ITW'S twin wheel brake casters offer the most advanced developments in caster brake design. Unlike many twin wheels featuring a "light switch" brake, our American made casters offer a full lever for easy application.



Furniture Twin Wheel Plastic - w/Brake-Full Hood

Gemini I: 2" Diameter twin wheel casters w/brake

Black (All Plastic)

Load Capacity: Mobile: 75 lbs. Static: 200 lbs.

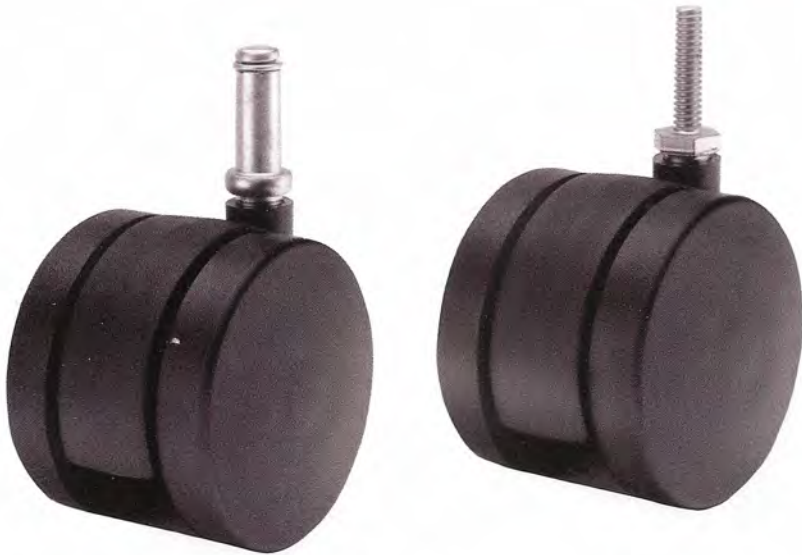
Mounting Height: 2⁵/₁₆"

60mm

Twin Wheel Casters

1-800-215-8220

2³/₈"
LOAD CAPACITY
100LBS. - 300LBS.



Furniture Twin Wheel Plastic - Center Housing

Gemini II: 2³/₈" Diameter twin wheel casters

Black (All Plastic) • *Soft wheels are available*

Load Capacity: Mobile: 100 lbs. Static: 300 lbs.

Mounting Height: 2⁵/₈"



Furniture Twin Wheel Plastic - w/Brake-Center Housing

Gemini II: 2³/₈" Diameter twin wheel casters w/brake

Black (All Plastic) • *Soft wheels are available*

Load Capacity: Mobile: 100 lbs. Static: 300 lbs.

Mounting Height: 2⁵/₈"

ITW'S 60mm twin wheel casters feature a nylon center housing and are available with nylon or soft wheels. Our 60mm soft twin wheels provide maximum floor protection and quiet, smooth operation.

ITW'S twin wheel brake casters offer the most advanced developments in caster brake design. Unlike many twin wheels featuring a "light switch" brake, our American made casters offer a full lever for easy application.

100mm Twin Wheel Casters

1-800-215-8220

4"
LOAD CAPACITY
200LBS. - 440LBS.

Provides the stability required for delicate operations of computer equipment and medical furniture. Available in soft wheel design for a quiet roll on vinyl floor.

Overcomes typical elevator gap problems in hospital and office environments. Dual 4" diameter wheels roll over obstructions easier than single wheel casters.

The chemical resistant nylon housing eliminates corrosion typical in steel constructed casters.



FEATURES

- Institutional: 4" twin wheel casters
- Chemical Resistant Nylon Housing
- Bearing-less construction & Self Lubricating Pintle

Attachment Method	Size	Caster Part Number	Caster with Brake Part Number
Friction Ring Stem	7/16" x 1 3/8"	41000-0078-0000	41100-0078-0000
Threaded Stem	1/2" - 13 x 1"	41000-0091-0000	41100-0091-0000
Top Plate	2 1/2" x 3 3/4"	41000-00B7-0000	41100-00B7-0000

100mm Twin Wheel Casters

1-800-215-8220

4"
LOAD CAPACITY
200LBS. - 440LBS.

FEATURES

- Institutional: 4" twin wheel casters
- Chemical Resistant Nylon Housing
- Bearing-less construction & Self Lubricating Pintle
- Brakes: Cam Operated



The bearingless construction and self-lubricating pintle eliminates the possibility of steaming any lubricants out of conventional raceways. Steam cleaning will not affect the finish.

Applications include uses in the following industries:

- Healthcare
- Business Machine
- Food Service
- Display
- General

TEST DATA:

Impact Resistance:

ITW's 4" Twin Wheel Caster is made of a durable plastic material that has a "memory". This enables the caster to return to its original shape after impact.

Rolling Resistance and Swivel Tests:

Compared to a 4" x 1" Single Wheel Caster with dual ball bearing raceways, the 4" Twin Wheel Caster exhibits comparable swivel and lower rolling resistance on both carpeted and vinyl floor coverings.

LOAD RATINGS:
SOFT WHEEL

STATIC
440lbs.

DYNAMIC
200lbs.