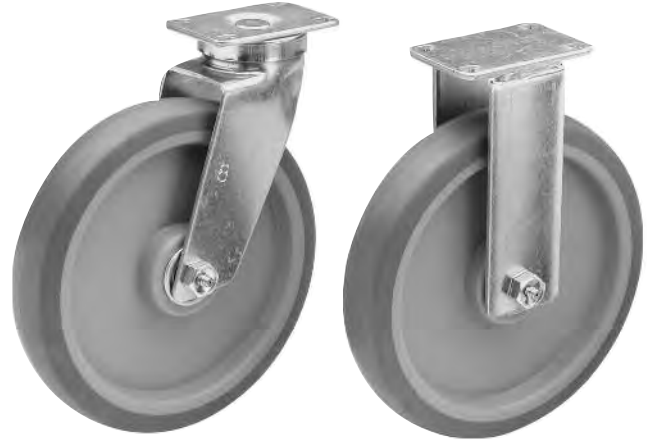


155 & 165 SERIES

Top Plate Casters

- Finish—Bright zinc plating.
- Swivel—Double ball bearing with hardened raceways for extra strength.
- Dust Cover—Helps protect swivel bearings.
- Construction—Heavy gauge cold rolled steel, formed for strength and heat treated.
- King Pin— $\frac{1}{2}$ " steel rivet.
- Fork leg spacing 2".
- $2\frac{3}{8}$ " x $3\frac{5}{8}$ " top plate.



Diameter	Tread Width	Wheel Type	Bearing Type	Capacity	Load Height	Swivel Radius	Caster Number	
							Swivel	Rigid
8"	1½"	Polyolefin	Roller	400	9½"	6½"	85-155-12	85-165-12
	1½"	Polyolefin	Ball	400			85-155-13	85-165-13
	1½"	Polyolefin	Delrin	400			85-155-14	85-165-14
	1½"	Mold-On Poly	Roller	400			85-155-22	85-165-22
	1½"	Mold-On Poly	Ball	400			85-155-23	85-165-23
	1½"	Mold-On Poly	Delrin	400			85-155-24	85-165-24
	1½"	Softie	Roller	275			85-155-152	85-165-152
	1½"	Softie	Ball	275			85-155-153	85-165-153
	1½"	Softie	Delrin	275			85-155-154	85-165-154
	1½"	TPR 82A	Roller	400			85-155-192	85-165-192
	1½"	TPR 82A	Ball	400			85-155-193	85-165-193
	1½"	TPR 82A	Delrin	400			85-155-194	85-165-194
	1½"	TPR 60A	Roller	400			85-155-222	85-165-222
	1½"	TPR 60A	Ball	400			85-155-223	85-165-223
	1½"	TPR 60A	Delrin	400			85-155-224	85-165-224