

100 to 145 lb.
capacity
1" wheel tread
width

Light Duty Swivel and Rigid Plate Casters

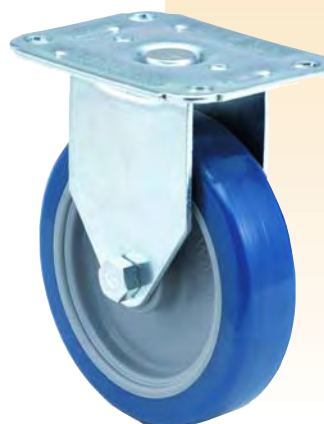


STANDARD FEATURES

- **Light duty applications.**
- **Double row swivel construction.**
- **5/16" diameter nut and bolt axle.**
- **Zinc-plated finish for corrosion resistance and appearance.**
- **Heat treat hardened and factory lubricated swivel raceways.**



SERIES 2F68
Double Row Swivel
Plate Caster
(2F6804004000100)



SERIES 1F63
Two-Piece Rigid
Plate Caster
(1F6304P25000100)

OPTIONS Consult Factory

Side Pinch Type Wheel Brake



- Side mount pinch type wheel brake available for all swivel models.

Strap Type Wheel Brake



- Strap type wheel brake available for all swivel models.

Trailing End Wheel Brake



- Positive lock, easy access tread type wheel brake. Field installable brake kits available.

Thread Guards



- Prevents objects from wrapping on wheel axle and obstructing rotation.
- Cannot be used with wheel brake.
- Available for most wheels.

Other

- Economical Rivet Axle
- One Piece Rigid Casters
- Nickel-Plated Finish
- Delrin Bearing Available For All Poly II Wheels
- NSF Certified Casters Available



Rubber "O" Ring Swivel Raceway Grease Seal

**** Plate Code Number** **Top Plate Choices**



Overall Size: 2-3/4" x 3-3/4"
Hole Spacing: 1-3/4" x 3"
Hole Diameter: 11/32"
Bolt Diameter: 5/16"



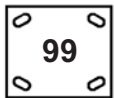
Overall Size: 2-3/4" x 3-3/4"
Hole Spacing: 1-3/4" x 2-5/8" to 3"
Hole Diameter: 11/32" x 1/2" slots
Bolt Diameter: 5/16"



Overall Size: 3-1/8" x 4-1/8"
Hole Spacing: 1-3/4" x 3" to 2-3/8" x 3-3/8"
Hole Diameter: 3/8" x 3/4" slots
Bolt Diameter: 5/16"



Overall Size: 3-1/8" x 4-1/8"
Hole Spacing: 2-3/8" x 3-7/16"
Hole Diameter: 11/32"
Bolt Diameter: 5/16"



Overall Size: 3-3/4" x 4-5/8"
Hole Spacing: 2-5/8" x 3-5/8" to 3" x 3"
Hole Diameter: 3/8" x 3/4" slots
Bolt Diameter: 5/16"

Wheel Types



Cushionex Supreme
Black soft rubber tread molded to black hard rubber core.



Spartan Supreme
Black hard rubber tread molded to black hard rubber core.



Poly II Rubber
Dark gray thermoplastic rubber tread molded to light gray polypropylene core.



Durafoam (Solid)
Black molded polypropylene.



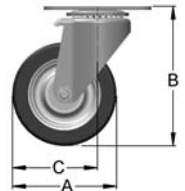
Poly II Urethane
Dark blue polyurethane tread molded to light gray polypropylene core.



Durafoam (Dished)
Black molded polypropylene.

SERIES 2F68 SWIVEL AND 1F63 RIGID PLATE CASTERS

A Wheel Dia. (inches)	Approximate Tread Width (inches)	Caster Capacity (pounds)	Wheel Bearing Type	B Height (inches)	C Swivel Radius (inches)	Approximate Weight (pounds)	Swivel Caster Part No.	Rigid Caster Part No.
CUSHIONEX SUPREME WHEEL								
3	1	100	Delrin	3-13/16	2-3/4	1-1/4	2F68030040001**	1F63030040001**
4	1	115	Delrin	4-13/16	3-1/4	1-1/2	2F68040040001**	1F63040040001**
5	1	125	Delrin	5-13/16	4	2	2F68050040001**	1F63050040001**
POLY II RUBBER WHEEL								
3	1	125	Plain	3-13/16	2-3/4	1	2F6803P260001**	1F6303P260001**
4	1	135	Plain	4-13/16	3-1/4	1-1/4	2F6804P260001**	1F6304P260001**
5	1	145	Plain	5-13/16	4	1-1/2	2F6805P260001**	1F6305P260001**
SPARTAN SUPREME WHEEL								
3	1	125	Delrin	3-13/16	2-3/4	1-1/4	2F68030090001**	1F63030090001**
4	1	140	Delrin	4-13/16	3-1/4	1-1/2	2F68040090001**	1F63040090001**
5	1	145	Delrin	5-13/16	4	2	2F68050090001**	1F63050090001**
DURAFOAM WHEEL								
3	1	125	Plain	3-13/16	2-3/4	1	2F68030270001**	1F63030270001**
4	1	140	Plain	4-13/16	3-1/4	1-1/4	2F68040270001**	1F63040270001**
5	1	145	Plain	5-13/16	4	1-1/2	2F68050270001**	1F63050270001**
POLY II URETHANE WHEEL								
3	1	125	Plain	3-13/16	2-3/4	1	2F6803P250001**	1F6303P250001**
4	1	140	Plain	4-13/16	3-1/4	1-1/4	2F6804P250001**	1F6304P250001**
5	1	145	Plain	5-13/16	4	1-1/2	2F6805P250001**	1F6305P250001**



** NOTE: For your plate choice, replace ** in part number with plate code number shown in top plate choices.